

LPAR6 Antibody - C-terminal region
Rabbit Polyclonal Antibody
Catalog # AI15368**Specification**

LPAR6 Antibody - C-terminal region - Product Information

Application	WB
Primary Accession	P43657
Other Accession	NM_005767 , NP_005758
Reactivity	Human, Mouse, Rat, Rabbit, Pig, Sheep, Horse, Bovine, Dog
Predicted	Human, Mouse, Rat, Rabbit, Pig, Sheep, Horse, Bovine, Dog
Host	Rabbit
Clonality	Polyclonal
Calculated MW	38kDa KDa

LPAR6 Antibody - C-terminal region - Additional Information**Gene ID** 10161**Alias Symbol** LAH3, MGC120358, P2RY5, P2Y5**Other Names**

Lysophosphatidic acid receptor 6, LPA receptor 6, LPA-6, Oleoyl-L-alpha-lysophosphatidic acid receptor, P2Y purinoceptor 5, P2Y5, Purinergic receptor 5, RB intron encoded G-protein coupled receptor, LPAR6, P2RY5

Format

Liquid. Purified antibody supplied in 1x PBS buffer with 0.09% (w/v) sodium azide and 2% sucrose.

Reconstitution & Storage

Add 50 ul of distilled water. Final anti-LPAR6 antibody concentration is 1 mg/ml in PBS buffer with 2% sucrose. For longer periods of storage, store at 20°C. Avoid repeat freeze-thaw cycles.

Precautions

LPAR6 Antibody - C-terminal region is for research use only and not for use in diagnostic or therapeutic procedures.

LPAR6 Antibody - C-terminal region - Protein Information**Name** LPAR6**Synonyms** P2RY5**Function**

Binds to oleoyl-L-alpha-lysophosphatidic acid (LPA). Intracellular cAMP is involved in the receptor activation. Important for the maintenance of hair growth and texture.

Cellular Location

Cell membrane; Multi-pass membrane protein

Tissue Location

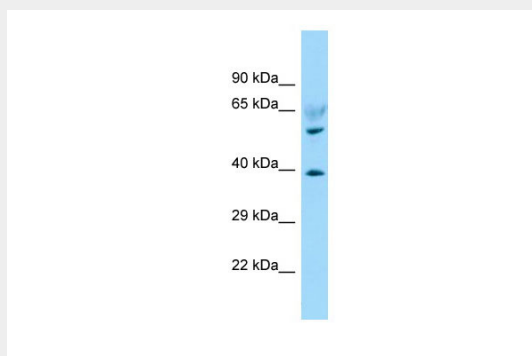
Expressed ubiquitously, including in skin and hair follicle cells. Detected in both Henle's and Huxley's layers of the inner root sheath of the hair follicle and in suprabasal layers of the epidermis (at protein level). Expressed at low levels in peripheral blood leukocytes.

LPAR6 Antibody - C-terminal region - Protocols

Provided below are standard protocols that you may find useful for product applications.

- [Western Blot](#)
- [Blocking Peptides](#)
- [Dot Blot](#)
- [Immunohistochemistry](#)
- [Immunofluorescence](#)
- [Immunoprecipitation](#)
- [Flow Cytometry](#)
- [Cell Culture](#)

LPAR6 Antibody - C-terminal region - Images



WB Suggested Anti-LPAR6 Antibody Titration: 1.0 μ g/ml

Positive Control: Fetal Heart

LPAR6 Antibody - C-terminal region - References

- Toguchida J., et al. *Genomics* 17:535-543(1993).
Herzog H., et al. *Genome Res.* 6:858-861(1996).
Bohm S.K., et al. Submitted (JUL-1997) to the EMBL/GenBank/DDBJ databases.
Bechtel S., et al. *BMC Genomics* 8:399-399(2007).
Ota T., et al. *Nat. Genet.* 36:40-45(2004).