

LGMN Antibody - middle region
Rabbit Polyclonal Antibody
Catalog # AI15367**Specification**

LGMN Antibody - middle region - Product Information

Application	WB
Primary Accession	O99538
Other Accession	NM_005606 , NP_005597
Reactivity	Human, Mouse, Rat, Rabbit, Pig, Sheep, Horse, Bovine, Guinea Pig, Dog
Predicted	Human, Mouse, Rat, Rabbit, Pig, Sheep, Horse, Bovine, Guinea Pig, Dog
Host	Rabbit
Clonality	Polyclonal
Calculated MW	48kDa KDa

LGMN Antibody - middle region - Additional Information**Gene ID** 5641**Alias Symbol** **AEP, LGMN1, PRSC1****Other Names**

Legumain, 3.4.22.34, Asparaginyl endopeptidase, Protease, cysteine 1, LGMN, PRSC1

Format

Liquid. Purified antibody supplied in 1x PBS buffer with 0.09% (w/v) sodium azide and 2% sucrose.

Reconstitution & Storage

Add 50 ul of distilled water. Final anti-LGMN antibody concentration is 1 mg/ml in PBS buffer with 2% sucrose. For longer periods of storage, store at 20°C. Avoid repeat freeze-thaw cycles.

Precautions

LGMN Antibody - middle region is for research use only and not for use in diagnostic or therapeutic procedures.

LGMN Antibody - middle region - Protein Information**Name** LGMN {ECO:0000303|PubMed:30425301, ECO:0000312|HGNC:HGNC:9472}**Function**

Has a strict specificity for hydrolysis of asparaginyl bonds (PubMed:23776206). Can also cleave aspartyl bonds slowly, especially under acidic conditions (PubMed:23776206). Involved in the processing of proteins for MHC class II antigen presentation in the lysosomal/endosomal system (PubMed:9872320). Also involved in MHC class I antigen presentation in

cross-presenting dendritic cells by mediating cleavage and maturation of Perforin-2 (MPEG1), thereby promoting antigen translocation in the cytosol (By similarity). Required for normal lysosomal protein degradation in renal proximal tubules (By similarity). Required for normal degradation of internalized EGFR (By similarity). Plays a role in the regulation of cell proliferation via its role in EGFR degradation (By similarity).

Cellular Location

Lysosome.

Tissue Location

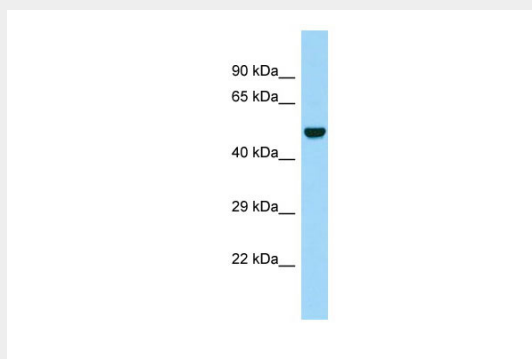
Ubiquitous. Particularly abundant in kidney, heart and placenta.

LGMN Antibody - middle region - Protocols

Provided below are standard protocols that you may find useful for product applications.

- [Western Blot](#)
- [Blocking Peptides](#)
- [Dot Blot](#)
- [Immunohistochemistry](#)
- [Immunofluorescence](#)
- [Immunoprecipitation](#)
- [Flow Cytometry](#)
- [Cell Culture](#)

LGMN Antibody - middle region - Images



WB Suggested Anti-LGMN Antibody Titration: 1.0 µg/ml
Positive Control: Fetal Brain

LGMN Antibody - middle region - References

Chen J.-M., et al. *J. Biol. Chem.* 272:8090-8098(1997).
Tanaka T., et al. *Cytogenet. Cell Genet.* 74:120-123(1996).
Li W.B., et al. Submitted (JAN-2003) to the EMBL/GenBank/DDBJ databases.
Heilig R., et al. *Nature* 421:601-607(2003).
Chen J.-M., et al. *Biochem. J.* 352:327-334(2000).