

IDH3B Antibody - N-terminal region
Rabbit Polyclonal Antibody
Catalog # AI15365

Specification

IDH3B Antibody - N-terminal region - Product Information

Application	WB
Primary Accession	O43837
Other Accession	NM_006899 , NP_008830
Reactivity	Human, Mouse, Rat, Rabbit, Pig, Horse, Bovine, Guinea Pig, Dog
Predicted	Human, Mouse, Rat, Rabbit, Pig, Horse, Bovine, Guinea Pig, Dog
Host	Rabbit
Clonality	Polyclonal
Calculated MW	42kDa kDa

IDH3B Antibody - N-terminal region - Additional Information

Gene ID 3420

Alias Symbol **FLJ11043, H-IDHB, MGC903, RP46**

Other Names

Isocitrate dehydrogenase [NAD] subunit beta, mitochondrial, 1.1.1.41, Isocitric dehydrogenase subunit beta, NAD(+)-specific ICDH subunit beta, IDH3B

Format

Liquid. Purified antibody supplied in 1x PBS buffer with 0.09% (w/v) sodium azide and 2% sucrose.

Reconstitution & Storage

Add 50 ul of distilled water. Final anti-IDH3B antibody concentration is 1 mg/ml in PBS buffer with 2% sucrose. For longer periods of storage, store at 20°C. Avoid repeat freeze-thaw cycles.

Precautions

IDH3B Antibody - N-terminal region is for research use only and not for use in diagnostic or therapeutic procedures.

IDH3B Antibody - N-terminal region - Protein Information

Name IDH3B

Function

Plays a structural role to facilitate the assembly and ensure the full activity of the enzyme catalyzing the decarboxylation of isocitrate (ICT) into alpha-ketoglutarate. The heterodimer composed of the alpha (IDH3A) and beta (IDH3B) subunits and the heterodimer composed of the alpha (IDH3A) and gamma (IDH3G) subunits, have considerable basal activity but the full activity of the heterotetramer (containing two subunits of IDH3A, one of IDH3B and one of IDH3G) requires the assembly and cooperative function of both heterodimers.

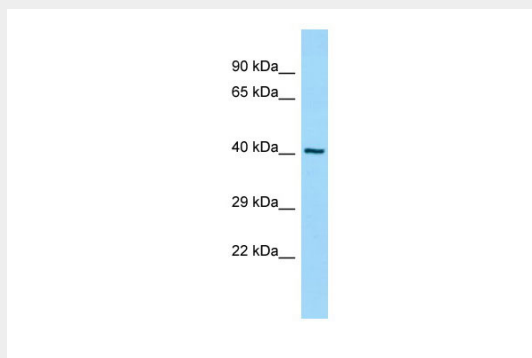
Cellular Location
Mitochondrion.

IDH3B Antibody - N-terminal region - Protocols

Provided below are standard protocols that you may find useful for product applications.

- [Western Blot](#)
- [Blocking Peptides](#)
- [Dot Blot](#)
- [Immunohistochemistry](#)
- [Immunofluorescence](#)
- [Immunoprecipitation](#)
- [Flow Cytometry](#)
- [Cell Culture](#)

IDH3B Antibody - N-terminal region - Images



WB Suggested Anti-IDH3B Antibody Titration: 1.0 μ g/ml

Positive Control: HeLa Whole Cell IDH3B is strongly supported by BioGPS gene expression data to be expressed in Human HeLa cells

IDH3B Antibody - N-terminal region - References

- Kim Y.-O., et al. J. Biol. Chem. 274:36866-36875(1999).
Ota T., et al. Nat. Genet. 36:40-45(2004).
Deloukas P., et al. Nature 414:865-871(2001).
Mural R.J., et al. Submitted (SEP-2005) to the EMBL/GenBank/DDBJ databases.
Bechtel S., et al. BMC Genomics 8:399-399(2007).