

**GNG3 Antibody - middle region**  
**Rabbit Polyclonal Antibody**  
**Catalog # AI15363**

**Specification**

---

**GNG3 Antibody - middle region - Product Information**

Application	WB
Primary Accession	<a href="#">P63215</a>
Other Accession	<a href="#">NM_012202</a> , <a href="#">NP_036334</a>
Reactivity	Human, Mouse, Rat, Rabbit, Pig, Horse, Bovine, Guinea Pig, Dog
Predicted	Human, Mouse, Rat, Rabbit, Pig, Horse, Bovine, Guinea Pig, Dog
Host	Rabbit
Clonality	Polyclonal
Calculated MW	8kDa KDa

**GNG3 Antibody - middle region - Additional Information**

**Gene ID** 2785

**Other Names**

Guanine nucleotide-binding protein G(I)/G(S)/G(O) subunit gamma-3, GNG3, GNGT3

**Format**

Liquid. Purified antibody supplied in 1x PBS buffer with 0.09% (w/v) sodium azide and 2% sucrose.

**Reconstitution & Storage**

Add 50 ul of distilled water. Final anti-GNG3 antibody concentration is 1 mg/ml in PBS buffer with 2% sucrose. For longer periods of storage, store at 20°C. Avoid repeat freeze-thaw cycles.

**Precautions**

GNG3 Antibody - middle region is for research use only and not for use in diagnostic or therapeutic procedures.

**GNG3 Antibody - middle region - Protein Information**

**Name** GNG3

**Synonyms** GNGT3

**Function**

Guanine nucleotide-binding proteins (G proteins) are involved as a modulator or transducer in various transmembrane signaling systems. The beta and gamma chains are required for the GTPase activity, for replacement of GDP by GTP, and for G protein-effector interaction.

**Cellular Location**

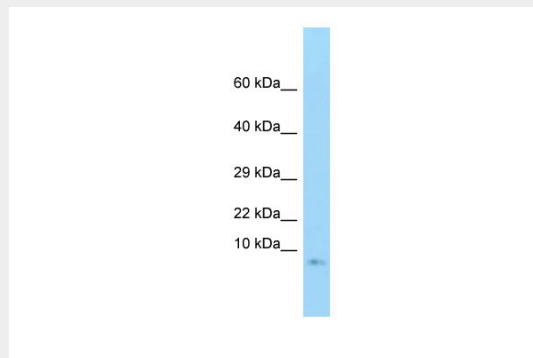
Cell membrane; Lipid-anchor; Cytoplasmic side

## GNG3 Antibody - middle region - Protocols

Provided below are standard protocols that you may find useful for product applications.

- [Western Blot](#)
- [Blocking Peptides](#)
- [Dot Blot](#)
- [Immunohistochemistry](#)
- [Immunofluorescence](#)
- [Immunoprecipitation](#)
- [Flow Cytometry](#)
- [Cell Culture](#)

## GNG3 Antibody - middle region - Images



WB Suggested Anti-GNG3 Antibody Titration: 1.0  $\mu$ g/ml  
Positive Control: Fetal Brain

## GNG3 Antibody - middle region - References

Peng Y., et al. Submitted (SEP-1998) to the EMBL/GenBank/DDBJ databases.  
Hurowitz E.H., et al. DNA Res. 7:111-120(2000).  
Ding J.B., et al. Submitted (JUL-2003) to the EMBL/GenBank/DDBJ databases.  
Puhl H.L. III, et al. Submitted (MAR-2002) to the EMBL/GenBank/DDBJ databases.  
Ota T., et al. Nat. Genet. 36:40-45(2004).