

SCUBE3 Antibody - N-terminal region
Rabbit Polyclonal Antibody
Catalog # AI15350**Specification**

SCUBE3 Antibody - N-terminal region - Product Information

Application	WB
Primary Accession	Q8IX30
Other Accession	NM_152753 , BAC03798
Reactivity	Human, Mouse, Rat, Rabbit, Pig, Horse, Bovine, Guinea Pig, Dog
Predicted	Human, Mouse, Rat, Rabbit, Pig, Horse, Bovine, Guinea Pig, Dog
Host	Rabbit
Clonality	Polyclonal
Calculated MW	96kDa KDa

SCUBE3 Antibody - N-terminal region - Additional Information**Gene ID** 222663**Alias Symbol** [CEGF3](#), [DKFZp686B09105](#), [DKFZp686B1223](#), [DKFZp686D20108](#), [FLJ34743](#)**Other Names**

Signal peptide, CUB and EGF-like domain-containing protein 3, SCUBE3 (HGNC:13655)

Format

Liquid. Purified antibody supplied in 1x PBS buffer with 0.09% (w/v) sodium azide and 2% sucrose.

Reconstitution & Storage

Add 50 ul of distilled water. Final anti-SCUBE3 antibody concentration is 1 mg/ml in PBS buffer with 2% sucrose. For longer periods of storage, store at 20°C. Avoid repeat freeze-thaw cycles.

Precautions

SCUBE3 Antibody - N-terminal region is for research use only and not for use in diagnostic or therapeutic procedures.

SCUBE3 Antibody - N-terminal region - Protein Information**Name** SCUBE3 ([HGNC:13655](#))**Function**

Is a positive regulator of the BMP signaling pathway, required for proper chondrogenesis, osteogenesis and skeletal development. It acts as a coreceptor for BMP ligands, particularly BMP2 and BMP4, facilitating their interactions with BMP type I receptors (PubMed:33308444). It is required for ligand-induced recruitment of BMP receptors to lipid rafts (By similarity). Binds to TGFBR2 and activates TGFBR2 signaling. In lung cancer cells, could serve as an endogenous autocrine and paracrine ligand of TGFBR2, which could regulate TGFBR2 signaling and hence modulate epithelial-mesenchymal transition and cancer progression.

Cellular Location

Secreted. Cell surface

Tissue Location

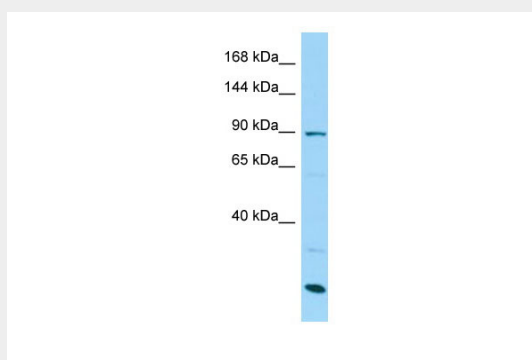
Highly expressed in osteoblasts. In normal lung, mainly expressed in bronchial epithelial cells. Tends to be up-regulated in lung cancer cells.

SCUBE3 Antibody - N-terminal region - Protocols

Provided below are standard protocols that you may find useful for product applications.

- [Western Blot](#)
- [Blocking Peptides](#)
- [Dot Blot](#)
- [Immunohistochemistry](#)
- [Immunofluorescence](#)
- [Immunoprecipitation](#)
- [Flow Cytometry](#)
- [Cell Culture](#)

SCUBE3 Antibody - N-terminal region - Images



WB Suggested Anti-SCUBE3 Antibody Titration: 1.0 µg/ml

Positive Control: MCF7 Whole Cell

SCUBE3 Antibody - N-terminal region - References

- Wu B.-T., et al. J. Biol. Chem. 279:37485-37490(2004).
Pfarr N., et al. Submitted (NOV-2001) to the EMBL/GenBank/DDBJ databases.
Ota T., et al. Nat. Genet. 36:40-45(2004).
Mungall A.J., et al. Nature 425:805-811(2003).
Mural R.J., et al. Submitted (JUL-2005) to the EMBL/GenBank/DDBJ databases.