

**ESF1 Antibody - C-terminal region**  
**Rabbit Polyclonal Antibody**  
**Catalog # AI15328****Specification**

---

**ESF1 Antibody - C-terminal region - Product Information**

Application	WB
Primary Accession	<a href="#">O9H501</a>
Other Accession	<a href="#">NM_016649</a> , <a href="#">NP_057733</a>
Reactivity	Human, Rat, Rabbit, Pig, Horse, Dog
Predicted	Human, Rat, Rabbit, Pig, Horse, Dog
Host	Rabbit
Clonality	Polyclonal
Calculated MW	99kDa KDa

**ESF1 Antibody - C-terminal region - Additional Information****Gene ID** 51575**Alias Symbol** ABTAP, C20orf6, FLJ20368, HDCMC28P, bA526K24.1**Other Names**

ESF1 homolog, ABT1-associated protein, ESF1, ABTAP, C20orf6

**Format**

Liquid. Purified antibody supplied in 1x PBS buffer with 0.09% (w/v) sodium azide and 2% sucrose.

**Reconstitution & Storage**

Add 50 ul of distilled water. Final anti-ESF1 antibody concentration is 1 mg/ml in PBS buffer with 2% sucrose. For longer periods of storage, store at 20°C. Avoid repeat freeze-thaw cycles.

**Precautions**

ESF1 Antibody - C-terminal region is for research use only and not for use in diagnostic or therapeutic procedures.

**ESF1 Antibody - C-terminal region - Protein Information****Name** ESF1**Synonyms** ABTAP, C20orf6**Function**

May constitute a novel regulatory system for basal transcription. Negatively regulates ABT1 (By similarity).

**Cellular Location**

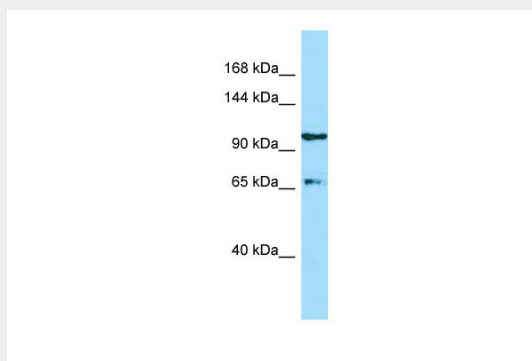
Nucleus, nucleolus. Nucleus, nucleoplasm

## ESF1 Antibody - C-terminal region - Protocols

Provided below are standard protocols that you may find useful for product applications.

- [Western Blot](#)
- [Blocking Peptides](#)
- [Dot Blot](#)
- [Immunohistochemistry](#)
- [Immunofluorescence](#)
- [Immunoprecipitation](#)
- [Flow Cytometry](#)
- [Cell Culture](#)

## ESF1 Antibody - C-terminal region - Images



WB Suggested Anti-ESF1 Antibody Titration: 1.0  $\mu$ g/ml

Positive Control: MCF7 Whole Cell ESF1 is supported by BioGPS gene expression data to be expressed in MCF7

## ESF1 Antibody - C-terminal region - References

Deloukas P., et al. Nature 414:865-871(2001).

Ota T., et al. Nat. Genet. 36:40-45(2004).

Zhao Z., et al. Submitted (MAY-1998) to the EMBL/GenBank/DDBJ databases.

Olsen J.V., et al. Cell 127:635-648(2006).

Dephoure N., et al. Proc. Natl. Acad. Sci. U.S.A. 105:10762-10767(2008).