

RCN3 Antibody - C-terminal region
Rabbit Polyclonal Antibody
Catalog # AI15315**Specification**

RCN3 Antibody - C-terminal region - Product Information

Application	WB
Primary Accession	O96D15
Other Accession	NM_020650 , NP_065701
Reactivity	Human, Mouse, Rat, Rabbit, Pig, Horse, Bovine, Guinea Pig, Dog
Predicted	Human, Mouse, Rat, Rabbit, Pig, Horse, Bovine, Guinea Pig, Dog
Host	Rabbit
Clonality	Polyclonal
Calculated MW	35kDa KDa

RCN3 Antibody - C-terminal region - Additional Information**Gene ID** 57333**Alias Symbol** **RLP49**
Other Names
Reticulocalbin-3, EF-hand calcium-binding protein RLP49, RCN3**Format**

Liquid. Purified antibody supplied in 1x PBS buffer with 0.09% (w/v) sodium azide and 2% sucrose.

Reconstitution & Storage

Add 50 ul of distilled water. Final anti-RCN3 antibody concentration is 1 mg/ml in PBS buffer with 2% sucrose. For longer periods of storage, store at 20°C. Avoid repeat freeze-thaw cycles.

Precautions

RCN3 Antibody - C-terminal region is for research use only and not for use in diagnostic or therapeutic procedures.

RCN3 Antibody - C-terminal region - Protein Information**Name** RCN3 ([HGNC:21145](#))**Function**Probable molecular chaperone assisting protein biosynthesis and transport in the endoplasmic reticulum (PubMed: <http://www.uniprot.org/citations/16433634> target="_blank">16433634, PubMed: <http://www.uniprot.org/citations/28939891> target="_blank">28939891). Required for the proper biosynthesis and transport of pulmonary surfactant-associated protein A/SP-A, pulmonary surfactant-associated protein D/SP-D and the lipid transporter ABCA3 (By similarity). By regulating both the proper expression and the degradation through the endoplasmic reticulum-associated protein degradation pathway of these

proteins plays a crucial role in pulmonary surfactant homeostasis (By similarity). Has an anti-fibrotic activity by negatively regulating the secretion of type I and type III collagens (PubMed:28939891). This calcium-binding protein also transiently associates with immature PCSK6 and regulates its secretion (PubMed:16433634).

Cellular Location

Endoplasmic reticulum lumen

Tissue Location

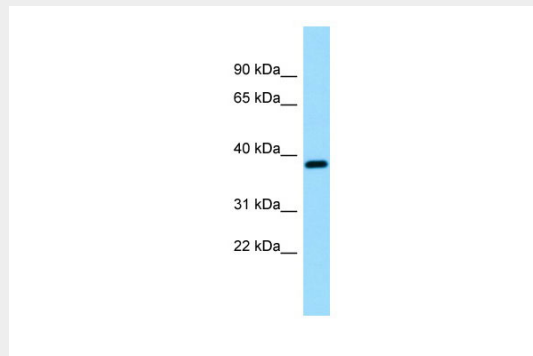
Widely expressed..

RCN3 Antibody - C-terminal region - Protocols

Provided below are standard protocols that you may find useful for product applications.

- [Western Blot](#)
- [Blocking Peptides](#)
- [Dot Blot](#)
- [Immunohistochemistry](#)
- [Immunofluorescence](#)
- [Immunoprecipitation](#)
- [Flow Cytometry](#)
- [Cell Culture](#)

RCN3 Antibody - C-terminal region - Images



WB Suggested Anti-RCN3 Antibody Titration: 1.0 µg/ml
Positive Control: Fetal Brain

RCN3 Antibody - C-terminal region - References

Liu F.,et al.Submitted (DEC-2002) to the EMBL/GenBank/DDBJ databases.
Hu R.-M.,et al.Proc. Natl. Acad. Sci. U.S.A. 97:9543-9548(2000).
Clark H.F.,et al.Genome Res. 13:2265-2270(2003).
Chen R.,et al.J. Proteome Res. 8:651-661(2009).
Burkard T.R.,et al.BMC Syst. Biol. 5:17-17(2011).