

GPR160 Antibody - C-terminal region
Rabbit Polyclonal Antibody
Catalog # AI15313**Specification**

GPR160 Antibody - C-terminal region - Product Information

Application	WB
Primary Accession	O9UJ42
Other Accession	NM_014373 , NP_055188
Reactivity	Human, Horse
Predicted	Human, Horse
Host	Rabbit
Clonality	Polyclonal
Calculated MW	40kDa KDa

GPR160 Antibody - C-terminal region - Additional Information**Gene ID** 26996**Alias Symbol** GPCR1, GPCR150**Other Names**

Probable G-protein coupled receptor 160, G-protein coupled receptor GPCR1, hGPCR1, GPR160, GPCR150

Format

Liquid. Purified antibody supplied in 1x PBS buffer with 0.09% (w/v) sodium azide and 2% sucrose.

Reconstitution & Storage

Add 50 ul of distilled water. Final anti-GPR160 antibody concentration is 1 mg/ml in PBS buffer with 2% sucrose. For longer periods of storage, store at 20°C. Avoid repeat freeze-thaw cycles.

Precautions

GPR160 Antibody - C-terminal region is for research use only and not for use in diagnostic or therapeutic procedures.

GPR160 Antibody - C-terminal region - Protein Information**Name** GPR160**Synonyms** GPCR150**Function**

Orphan receptor.

Cellular Location

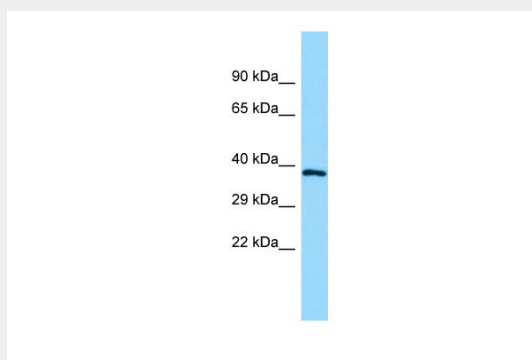
Cell membrane; Multi-pass membrane protein.

GPR160 Antibody - C-terminal region - Protocols

Provided below are standard protocols that you may find useful for product applications.

- [Western Blot](#)
- [Blocking Peptides](#)
- [Dot Blot](#)
- [Immunohistochemistry](#)
- [Immunofluorescence](#)
- [Immunoprecipitation](#)
- [Flow Cytometry](#)
- [Cell Culture](#)

GPR160 Antibody - C-terminal region - Images



WB Suggested Anti-GPR160 Antibody Titration: 1.0 μ g/ml

Positive Control: Hela Whole cell

GPR160 Antibody - C-terminal region - References

Conklin D., et al. Brief. Bioinform. 1:93-99(2000).

Takeda S., et al. FEBS Lett. 520:97-101(2002).

Mural R.J., et al. Submitted (SEP-2005) to the EMBL/GenBank/DDBJ databases.