

**FARSA Antibody - C-terminal region**  
**Rabbit Polyclonal Antibody**  
**Catalog # AI15311**

**Specification**

---

**FARSA Antibody - C-terminal region - Product Information**

Application	WB
Primary Accession	<a href="#">O9Y285</a>
Other Accession	<a href="#">NM_004461</a> , <a href="#">NP_004452</a>
Reactivity	Human, Mouse, Rat, Pig, Horse, Bovine, Guinea Pig, Dog
Predicted	Human, Mouse, Rat, Pig, Horse, Bovine, Guinea Pig, Dog
Host	Rabbit
Clonality	Polyclonal
Calculated MW	57kDa KDa

**FARSA Antibody - C-terminal region - Additional Information**

**Gene ID** 2193

**Alias Symbol** CML33, FARSL, FARSLA, FRSA, PheHA

**Other Names**

Phenylalanine--tRNA ligase alpha subunit, 6.1.1.20, CML33, Phenylalanyl-tRNA synthetase alpha subunit, PheRS, FARSA, FARS, FARSL, FARSLA

**Format**

Liquid. Purified antibody supplied in 1x PBS buffer with 0.09% (w/v) sodium azide and 2% sucrose.

**Reconstitution & Storage**

Add 50 ul of distilled water. Final anti-FARSA antibody concentration is 1 mg/ml in PBS buffer with 2% sucrose. For longer periods of storage, store at 20°C. Avoid repeat freeze-thaw cycles.

**Precautions**

FARSA Antibody - C-terminal region is for research use only and not for use in diagnostic or therapeutic procedures.

**FARSA Antibody - C-terminal region - Protein Information**

**Name** FARSA

**Synonyms** FARS, FARSL, FARSLA

**Cellular Location**

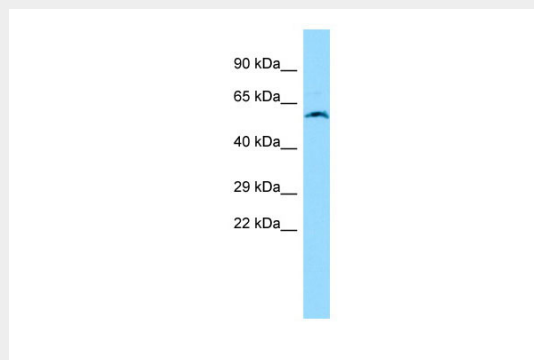
Cytoplasm {ECO:0000250|UniProtKB:Q505J8}.

## FARSA Antibody - C-terminal region - Protocols

Provided below are standard protocols that you may find useful for product applications.

- [Western Blot](#)
- [Blocking Peptides](#)
- [Dot Blot](#)
- [Immunohistochemistry](#)
- [Immunofluorescence](#)
- [Immunoprecipitation](#)
- [Flow Cytometry](#)
- [Cell Culture](#)

## FARSA Antibody - C-terminal region - Images



WB Suggested Anti-FARSA Antibody Titration: 1.0  $\mu$ g/ml

Positive Control: 293T Whole Cell FARSA is strongly supported by BioGPS gene expression data to be expressed in Human HEK293T cells

## FARSA Antibody - C-terminal region - References

- Sen S., et al. Proc. Natl. Acad. Sci. U.S.A. 94:6164-6169(1997).  
Rodova M., et al. Biochem. Biophys. Res. Commun. 255:765-773(1999).  
Motegi H., et al. Submitted (APR-1996) to the EMBL/GenBank/DDBJ databases.  
Kalnine N., et al. Submitted (MAY-2003) to the EMBL/GenBank/DDBJ databases.  
Ota T., et al. Nat. Genet. 36:40-45(2004).