

STARD7 Antibody - N-terminal region
Rabbit Polyclonal Antibody
Catalog # AI15305

Specification

STARD7 Antibody - N-terminal region - Product Information

Application	WB
Primary Accession	O9NQZ5
Other Accession	NM_020151 , NP_064536
Reactivity	Human, Pig, Horse, Dog
Predicted	Human, Pig, Horse, Dog
Host	Rabbit
Clonality	Polyclonal
Calculated MW	37kDa KDa

STARD7 Antibody - N-terminal region - Additional Information

Gene ID 56910

Alias Symbol **GTT1**

Other Names

StAR-related lipid transfer protein 7, mitochondrial, Gestational trophoblastic tumor protein 1, START domain-containing protein 7, StARD7, STARD7, GTT1

Format

Liquid. Purified antibody supplied in 1x PBS buffer with 0.09% (w/v) sodium azide and 2% sucrose.

Reconstitution & Storage

Add 50 ul of distilled water. Final anti-STARD7 antibody concentration is 1 mg/ml in PBS buffer with 2% sucrose. For longer periods of storage, store at 20°C. Avoid repeat freeze-thaw cycles.

Precautions

STARD7 Antibody - N-terminal region is for research use only and not for use in diagnostic or therapeutic procedures.

STARD7 Antibody - N-terminal region - Protein Information

Name STARD7

Synonyms GTT1

Function

May play a protective role in mucosal tissues by preventing exaggerated allergic responses.

Cellular Location

Mitochondrion.

Tissue Location

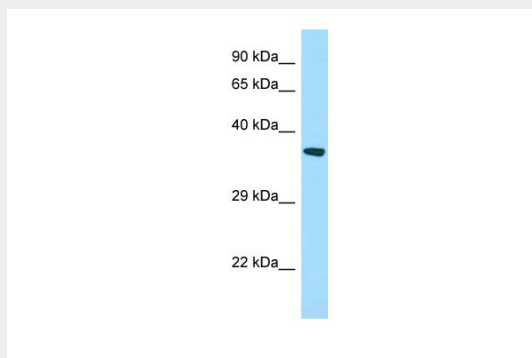
Expressed in nasal epithelial cells. Down-regulated in nasal epithelial cells in patients experiencing an asthma exacerbation as compared to stable asthmatics and healthy controls

STARD7 Antibody - N-terminal region - Protocols

Provided below are standard protocols that you may find useful for product applications.

- [Western Blot](#)
- [Blocking Peptides](#)
- [Dot Blot](#)
- [Immunohistochemistry](#)
- [Immunofluorescence](#)
- [Immunoprecipitation](#)
- [Flow Cytometry](#)
- [Cell Culture](#)

STARD7 Antibody - N-terminal region - Images



WB Suggested Anti-STARD7 Antibody Titration: 1.0 µg/ml
Positive Control: HT1080 Whole Cell

STARD7 Antibody - N-terminal region - References

- Durand S., et al. *Placenta* 25:37-44(2004).
Hillier L.W., et al. *Nature* 434:724-731(2005).
Mural R.J., et al. Submitted (SEP-2005) to the EMBL/GenBank/DDBJ databases.
Burkard T.R., et al. *BMC Syst. Biol.* 5:17-17(2011).