

NDUFAF2 Antibody - N-terminal region
Rabbit Polyclonal Antibody
Catalog # AI15288**Specification**

NDUFAF2 Antibody - N-terminal region - Product Information

| | |
|-------------------|---|
| Application | WB |
| Primary Accession | O8N183 |
| Other Accession | NM_174889 , NP_777549 |
| Reactivity | Human, Mouse, Rabbit, Horse, Bovine, Dog |
| Predicted | Human, Mouse, Rabbit, Horse, Bovine, Dog |
| Host | Rabbit |
| Clonality | Polyclonal |
| Calculated MW | 20kDa KDa |

NDUFAF2 Antibody - N-terminal region - Additional Information**Gene ID** 91942**Alias Symbol** B17.2L, FLJ22398, MMTN, NDUFA12L, mimitin**Other Names**

Mimitin, mitochondrial, B17.2-like, B17.2L, Myc-induced mitochondrial protein, MMTN, NADH dehydrogenase [ubiquinone] 1 alpha subcomplex assembly factor 2, NDUFA12-like protein, NDUFAF2, NDUFA12L

Format

Liquid. Purified antibody supplied in 1x PBS buffer with 0.09% (w/v) sodium azide and 2% sucrose.

Reconstitution & Storage

Add 50 ul of distilled water. Final anti-NDUFAF2 antibody concentration is 1 mg/ml in PBS buffer with 2% sucrose. For longer periods of storage, store at 20°C. Avoid repeat freeze-thaw cycles.

Precautions

NDUFAF2 Antibody - N-terminal region is for research use only and not for use in diagnostic or therapeutic procedures.

NDUFAF2 Antibody - N-terminal region - Protein Information**Name** NDUFAF2**Synonyms** NDUFA12L**Function**

Acts as a molecular chaperone for mitochondrial complex I assembly (PubMed:16200211, PubMed:19384974). Complex I functions in the transfer of electrons from NADH to the respiratory chain. The immediate electron

acceptor for the enzyme is believed to be ubiquinone (PubMed:16200211, PubMed:27626371).

Cellular Location

Mitochondrion.

Tissue Location

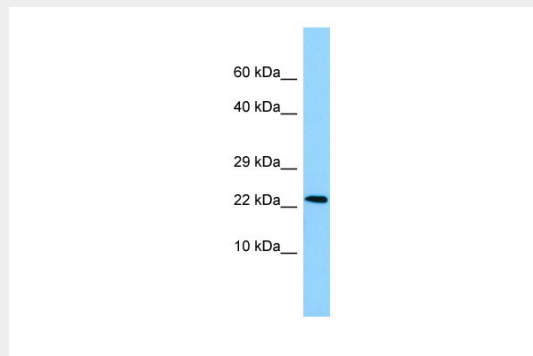
Highly expressed in ESCC cells. Also expressed in heart, skeletal muscle, liver, and in fibroblasts

NDUFAF2 Antibody - N-terminal region - Protocols

Provided below are standard protocols that you may find useful for product applications.

- [Western Blot](#)
- [Blocking Peptides](#)
- [Dot Blot](#)
- [Immunohistochemistry](#)
- [Immunofluorescence](#)
- [Immunoprecipitation](#)
- [Flow Cytometry](#)
- [Cell Culture](#)

NDUFAF2 Antibody - N-terminal region - Images



WB Suggested Anti-NDUFAF2 Antibody Titration: 1.0 µg/ml
Positive Control: MCF7 Whole Cell

NDUFAF2 Antibody - N-terminal region - References

- Tsuneoka M., et al. J. Biol. Chem. 280:19977-19985(2005).
Ota T., et al. Nat. Genet. 36:40-45(2004).
Mural R.J., et al. Submitted (JUL-2005) to the EMBL/GenBank/DDBJ databases.
Ogilvie I., et al. J. Clin. Invest. 115:2784-2792(2005).
Burkard T.R., et al. BMC Syst. Biol. 5:17-17(2011).