

**LGSN Antibody - N-terminal region**  
**Rabbit Polyclonal Antibody**  
**Catalog # AI15287****Specification**

---

**LGSN Antibody - N-terminal region - Product Information**

Application	<b>WB</b>
Primary Accession	<a href="#">Q5TDP6</a>
Other Accession	<a href="#">NM_016571</a> , <a href="#">NP_057655</a>
Reactivity	<b>Human, Rabbit, Bovine, Dog</b>
Predicted	<b>Human, Rabbit, Bovine, Dog</b>
Host	<b>Rabbit</b>
Clonality	<b>Polyclonal</b>
Calculated MW	<b>57kDa KDa</b>

**LGSN Antibody - N-terminal region - Additional Information****Gene ID** 51557**Alias Symbol** **GLULD1, LGS, MGC163238, MGC163240****Other Names**

Lengsin, Glutamate-ammonia ligase domain-containing protein 1, Lens glutamine synthase-like, LGSN, GLULD1, LGS

**Format**

Liquid. Purified antibody supplied in 1x PBS buffer with 0.09% (w/v) sodium azide and 2% sucrose.

**Reconstitution & Storage**

Add 50 ul of distilled water. Final anti-LGSN antibody concentration is 1 mg/ml in PBS buffer with 2% sucrose. For longer periods of storage, store at 20°C. Avoid repeat freeze-thaw cycles.

**Precautions**

LGSN Antibody - N-terminal region is for research use only and not for use in diagnostic or therapeutic procedures.

**LGSN Antibody - N-terminal region - Protein Information****Name** LGSN**Synonyms** GLULD1, LGS**Function**

May act as a component of the cytoskeleton or as a chaperone for the reorganization of intermediate filament proteins during terminal differentiation in the lens. Does not seem to have enzymatic activity (By similarity).

**Tissue Location**

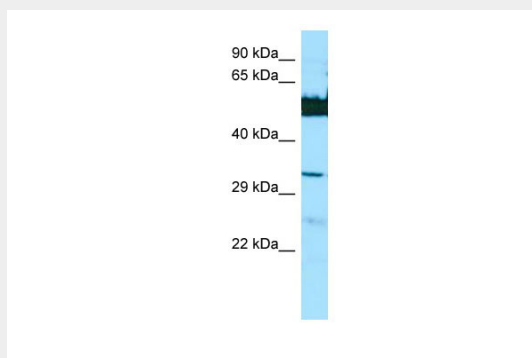
Abundantly expressed in lens.

## LGSN Antibody - N-terminal region - Protocols

Provided below are standard protocols that you may find useful for product applications.

- [Western Blot](#)
- [Blocking Peptides](#)
- [Dot Blot](#)
- [Immunohistochemistry](#)
- [Immunofluorescence](#)
- [Immunoprecipitation](#)
- [Flow Cytometry](#)
- [Cell Culture](#)

## LGSN Antibody - N-terminal region - Images



WB Suggested Anti-LGSN Antibody Titration: 1.0  $\mu$ g/ml  
Positive Control: HepG2 Whole Cell

## LGSN Antibody - N-terminal region - References

Grassi F., et al. *Biochem. Biophys. Res. Commun.* 350:424-429(2006).  
Wistow G., et al. *Mol. Vis.* 8:171-184(2002).  
Mungall A.J., et al. *Nature* 425:805-811(2003).  
Mural R.J., et al. Submitted (JUL-2005) to the EMBL/GenBank/DDBJ databases.