

**HPSE2 Antibody - N-terminal region**  
**Rabbit Polyclonal Antibody**  
**Catalog # AI15285**

**Specification**

---

**HPSE2 Antibody - N-terminal region - Product Information**

Application	WB
Primary Accession	<a href="#">O8WWQ2</a>
Other Accession	<a href="#">NM_001166245</a> , <a href="#">NP_001159717</a>
Reactivity	Human, Mouse, Dog
Predicted	Human, Mouse, Dog
Host	Rabbit
Clonality	Polyclonal
Calculated MW	54kDa KDa

**HPSE2 Antibody - N-terminal region - Additional Information**

**Gene ID** 60495

**Alias Symbol** [FLJ11684](#), [FLJ44022](#), [HPA2](#), [HPR2](#), [MGC133234](#)

**Other Names**

Inactive heparanase-2, Hpa2, HPSE2, HPA2

**Format**

Liquid. Purified antibody supplied in 1x PBS buffer with 0.09% (w/v) sodium azide and 2% sucrose.

**Reconstitution & Storage**

Add 50 ul of distilled water. Final anti-HPSE2 antibody concentration is 1 mg/ml in PBS buffer with 2% sucrose. For longer periods of storage, store at 20°C. Avoid repeat freeze-thaw cycles.

**Precautions**

HPSE2 Antibody - N-terminal region is for research use only and not for use in diagnostic or therapeutic procedures.

**HPSE2 Antibody - N-terminal region - Protein Information**

**Name** HPSE2

**Synonyms** HPA2

**Function**

Binds heparin and heparan sulfate with high affinity, but lacks heparanase activity. Inhibits HPSE, possibly by competing for its substrates (in vitro).

**Cellular Location**

Secreted, extracellular space, extracellular matrix

### Tissue Location

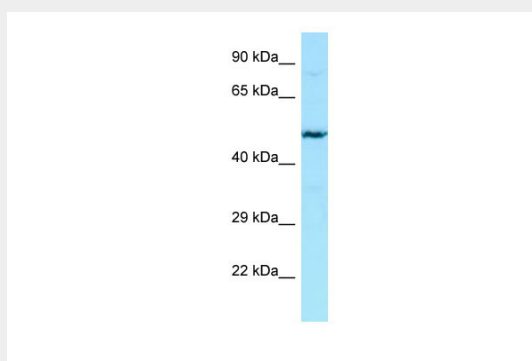
Widely expressed, with the highest expression in brain, mammary gland, prostate, small intestine, testis and uterus. In the central nervous system, expressed in the spinal chord, caudate nucleus, thalamus, substantia nigra, medulla oblongata, putamen and pons. In the urinary bladder, expressed in longitudinal and circular layers of detrusor muscle. Found both in normal and cancer tissues

### HPSE2 Antibody - N-terminal region - Protocols

Provided below are standard protocols that you may find useful for product applications.

- [Western Blot](#)
- [Blocking Peptides](#)
- [Dot Blot](#)
- [Immunohistochemistry](#)
- [Immunofluorescence](#)
- [Immunoprecipitation](#)
- [Flow Cytometry](#)
- [Cell Culture](#)

### HPSE2 Antibody - N-terminal region - Images



WB Suggested Anti-HPSE2 Antibody Titration: 1.0  $\mu$ g/ml  
Positive Control: Jurkat Whole Cell

### HPSE2 Antibody - N-terminal region - References

- McKenzie E., et al. *Biochem. Biophys. Res. Commun.* 276:1170-1177(2000).  
Legoux P., et al. Submitted (JAN-2002) to the EMBL/GenBank/DDBJ databases.  
Deloukas P., et al. *Nature* 429:375-381(2004).  
Pang J., et al. *Am. J. Hum. Genet.* 86:957-962(2010).  
Pang J., et al. *Am. J. Hum. Genet.* 87:161-161(2010).