

FLOT1 Antibody - C-terminal region
Rabbit Polyclonal Antibody
Catalog # AI15270**Specification**

FLOT1 Antibody - C-terminal region - Product Information

Application	WB
Primary Accession	O75955
Other Accession	NM_005803 , NP_005794
Reactivity	Human, Mouse, Rat, Rabbit, Pig, Horse, Bovine, Guinea Pig, Dog
Predicted	Human, Mouse, Rat, Rabbit, Pig, Horse, Bovine, Guinea Pig, Dog
Host	Rabbit
Clonality	Polyclonal
Calculated MW	47kDa KDa

FLOT1 Antibody - C-terminal region - Additional Information**Gene ID** 10211**Other Names**
Flotillin-1, FLOT1**Format**

Liquid. Purified antibody supplied in 1x PBS buffer with 0.09% (w/v) sodium azide and 2% sucrose.

Reconstitution & Storage

Add 50 ul of distilled water. Final anti-FLOT1 antibody concentration is 1 mg/ml in PBS buffer with 2% sucrose. For longer periods of storage, store at 20°C. Avoid repeat freeze-thaw cycles.

Precautions

FLOT1 Antibody - C-terminal region is for research use only and not for use in diagnostic or therapeutic procedures.

FLOT1 Antibody - C-terminal region - Protein Information**Name** FLOT1**Function**

May act as a scaffolding protein within caveolar membranes, functionally participating in formation of caveolae or caveolae-like vesicles.

Cellular Location

Cell membrane; Peripheral membrane protein. Endosome Membrane, caveola {ECO:0000250|UniProtKB:O08917}; Peripheral membrane protein {ECO:0000250|UniProtKB:O08917}. Melanosome. Membrane raft. Note=Identified by mass spectrometry in melanosome fractions from stage I to stage IV (PubMed:17081065)

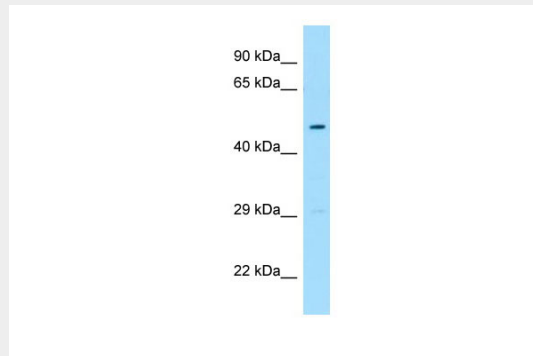
Membrane-associated protein of caveola (By similarity) {ECO:0000250|UniProtKB:O08917, ECO:0000269|PubMed:17081065}

FLOT1 Antibody - C-terminal region - Protocols

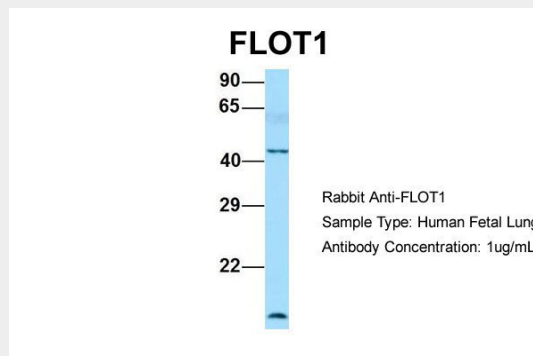
Provided below are standard protocols that you may find useful for product applications.

- [Western Blot](#)
- [Blocking Peptides](#)
- [Dot Blot](#)
- [Immunohistochemistry](#)
- [Immunofluorescence](#)
- [Immunoprecipitation](#)
- [Flow Cytometry](#)
- [Cell Culture](#)

FLOT1 Antibody - C-terminal region - Images



WB Suggested Anti-FLOT1 Antibody Titration: 1.0 µg/ml
Positive Control: Fetal Heart



Host:Rabbit
Target Name:FLOT1
Sample Tissue:Human Fetal Lung
Antibody Dilution: 1.0µg/ml

FLOT1 Antibody - C-terminal region - References

Edgar A.J.,et al.Int. J. Biochem. Cell Biol. 33:53-64(2001).
Zhang Q.-H.,et al.Genome Res. 10:1546-1560(2000).
Shiina S.,et al.Submitted (SEP-1999) to the EMBL/GenBank/DDBJ databases.

Ota T.,et al.Nat. Genet. 36:40-45(2004).
Mungall A.J.,et al.Nature 425:805-811(2003).