

GPR34 Antibody - C-terminal region
Rabbit Polyclonal Antibody
Catalog # AI15244**Specification**

GPR34 Antibody - C-terminal region - Product Information

Application	WB
Primary Accession	O9UPC5
Other Accession	NM_005300 , NP_005291
Reactivity	Human, Mouse, Rat, Rabbit, Sheep, Horse, Bovine, Guinea Pig, Dog
Predicted	Human, Mouse, Rat, Rabbit, Pig, Sheep, Horse, Bovine, Guinea Pig, Dog
Host	Rabbit
Clonality	Polyclonal
Calculated MW	44kDa KDa

GPR34 Antibody - C-terminal region - Additional Information**Gene ID** 2857**Other Names**

Probable G-protein coupled receptor 34, GPR34

Format

Liquid. Purified antibody supplied in 1x PBS buffer with 0.09% (w/v) sodium azide and 2% sucrose.

Reconstitution & Storage

Add 50 ul of distilled water. Final anti-GPR34 antibody concentration is 1 mg/ml in PBS buffer with 2% sucrose. For longer periods of storage, store at 20°C. Avoid repeat freeze-thaw cycles.

Precautions

GPR34 Antibody - C-terminal region is for research use only and not for use in diagnostic or therapeutic procedures.

GPR34 Antibody - C-terminal region - Protein Information**Name** GPR34**Function**

G-protein-coupled receptor of lysophosphatidylserine (LysoPS) that plays different roles in immune response (PubMed: [16460680](http://www.uniprot.org/citations/16460680)). Acts a damage-sensing receptor that triggers tissue repair upon recognition of dying neutrophils (By similarity). Mechanistically, apoptotic neutrophils release lysophosphatidylserine that are recognized by type 3 innate lymphoid cells (ILC3s) via GPR34, which activates downstream PI3K-AKT and RAS-ERK signaling pathways leading to STAT3 activation and IL-22 production (By similarity). Plays an important role in microglial function, controlling morphology and phagocytosis (By similarity).

Cellular Location

Cell membrane; Multi-pass membrane protein

Tissue Location

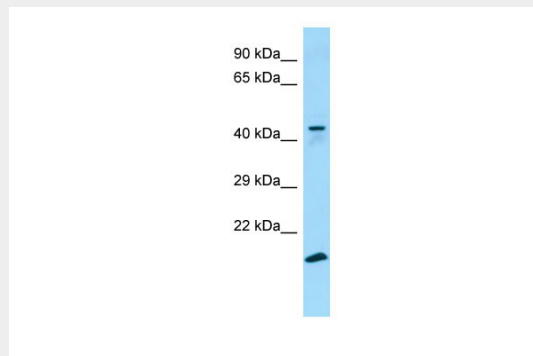
Broadly expressed. Highly expressed on mast cells (PubMed:16460680).

GPR34 Antibody - C-terminal region - Protocols

Provided below are standard protocols that you may find useful for product applications.

- [Western Blot](#)
- [Blocking Peptides](#)
- [Dot Blot](#)
- [Immunohistochemistry](#)
- [Immunofluorescence](#)
- [Immunoprecipitation](#)
- [Flow Cytometry](#)
- [Cell Culture](#)

GPR34 Antibody - C-terminal region - Images



WB Suggested Anti-GPR34 Antibody Titration: 1.0 µg/ml

Positive Control: 293T Whole Cell

GPR34 Antibody - C-terminal region - References

Schoneberg T., et al. *Biochim. Biophys. Acta* 1446:57-70(1999).

Marchese A., et al. *Genomics* 56:12-21(1999).

Jacobi F.K., et al. *Hum. Genet.* 107:89-91(2000).

Ota T., et al. *Nat. Genet.* 36:40-45(2004).