

**GULP1 Antibody - N-terminal region**  
**Rabbit Polyclonal Antibody**  
**Catalog # AI15231****Specification**

---

**GULP1 Antibody - N-terminal region - Product Information**

Application	WB
Primary Accession	<a href="#">Q9UBP9</a>
Other Accession	<a href="#">NM_016315</a> , <a href="#">NP_057399</a>
Reactivity	Human, Mouse, Rat, Rabbit, Pig, Horse, Bovine, Guinea Pig, Dog
Predicted	Human, Mouse, Rat, Rabbit, Pig, Horse, Bovine, Guinea Pig, Dog
Host	Rabbit
Clonality	Polyclonal
Calculated MW	34kDa kDa

**GULP1 Antibody - N-terminal region - Additional Information****Gene ID** 51454**Alias Symbol** CED-6, CED6, FLJ31156, GULP**Other Names**

PTB domain-containing engulfment adapter protein 1, Cell death protein 6 homolog, PTB domain adapter protein CED-6, Protein GULP, GULP1, CED6, GULP

**Format**

Liquid. Purified antibody supplied in 1x PBS buffer with 0.09% (w/v) sodium azide and 2% sucrose.

**Reconstitution & Storage**

Add 50 ul of distilled water. Final anti-GULP1 antibody concentration is 1 mg/ml in PBS buffer with 2% sucrose. For longer periods of storage, store at 20°C. Avoid repeat freeze-thaw cycles.

**Precautions**

GULP1 Antibody - N-terminal region is for research use only and not for use in diagnostic or therapeutic procedures.

**GULP1 Antibody - N-terminal region - Protein Information****Name** GULP1**Synonyms** CED6, GULP**Function**

May function as an adapter protein. Required for efficient phagocytosis of apoptotic cells. Modulates cellular glycosphingolipid and cholesterol transport. May play a role in the internalization and endosomal trafficking of various LRP1 ligands, such as PSAP. Increases cellular levels of GTP-bound ARF6.

### Cellular Location

Cytoplasm. Note=May associate with the cytoplasmic side of the plasma membrane and early endosomes

### Tissue Location

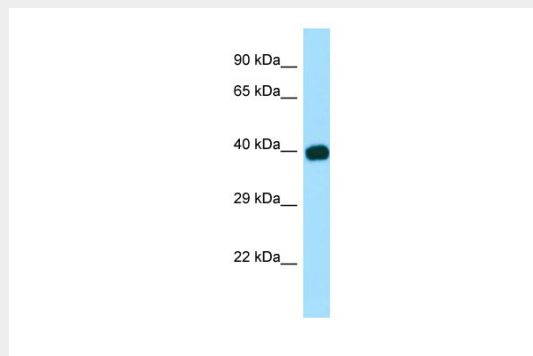
Widely expressed. Detected in macrophages, pancreas, kidney, skeletal muscle, heart, colon, intestine, lung, placenta and ovary.

### GULP1 Antibody - N-terminal region - Protocols

Provided below are standard protocols that you may find useful for product applications.

- [Western Blot](#)
- [Blocking Peptides](#)
- [Dot Blot](#)
- [Immunohistochemistry](#)
- [Immunofluorescence](#)
- [Immunoprecipitation](#)
- [Flow Cytometry](#)
- [Cell Culture](#)

### GULP1 Antibody - N-terminal region - Images



WB Suggested Anti-GULP1 Antibody Titration: 1.0 µg/ml  
Positive Control: Fetal Brain

### GULP1 Antibody - N-terminal region - References

- Liu Q.A.,et al.Curr. Biol. 9:1347-1350(1999).  
Smits E.,et al.Curr. Biol. 9:1351-1354(1999).  
Ota T.,et al.Nat. Genet. 36:40-45(2004).  
Hillier L.W.,et al.Nature 434:724-731(2005).  
Mural R.J.,et al.Submitted (SEP-2005) to the EMBL/GenBank/DDBJ databases.