

SUCLG1 antibody - N-terminal region
Rabbit Polyclonal Antibody
Catalog # AI15226

Specification

SUCLG1 antibody - N-terminal region - Product Information

Application	WB
Primary Accession	P53597
Other Accession	NM_003849 , NP_003840
Reactivity	Human, Mouse, Rat, Rabbit, Pig, Horse, Yeast, Bovine, Guinea Pig, Dog
Predicted	Human, Mouse, Rat, Rabbit, Pig, Horse, Yeast, Bovine, Guinea Pig, Dog
Host	Rabbit
Clonality	Polyclonal
Calculated MW	33kDa KDa

SUCLG1 antibody - N-terminal region - Additional Information

Gene ID 8802

Alias Symbol [FLJ21114](#), [FLJ43513](#), [GALPHA](#), [SUCLA1](#), [MTDPS9](#)

Other Names

Succinyl-CoA ligase [ADP/GDP-forming] subunit alpha, mitochondrial, 6.2.1.4, 6.2.1.5, Succinyl-CoA synthetase subunit alpha, SCS-alpha, SUCLG1

Format

Liquid. Purified antibody supplied in 1x PBS buffer with 0.09% (w/v) sodium azide and 2% sucrose.

Reconstitution & Storage

Add 50 ul of distilled water. Final anti-SUCLG1 antibody concentration is 1 mg/ml in PBS buffer with 2% sucrose. For longer periods of storage, store at 20°C. Avoid repeat freeze-thaw cycles.

Precautions

SUCLG1 antibody - N-terminal region is for research use only and not for use in diagnostic or therapeutic procedures.

SUCLG1 antibody - N-terminal region - Protein Information

Name SUCLG1 {ECO:0000255|HAMAP-Rule:MF_03222}

Function

Succinyl-CoA synthetase functions in the citric acid cycle (TCA), coupling the hydrolysis of succinyl-CoA to the synthesis of either ATP or GTP and thus represents the only step of substrate-level phosphorylation in the TCA. The alpha subunit of the enzyme binds the substrates coenzyme A and phosphate, while succinate binding and specificity for either ATP or GTP is provided by different beta subunits.

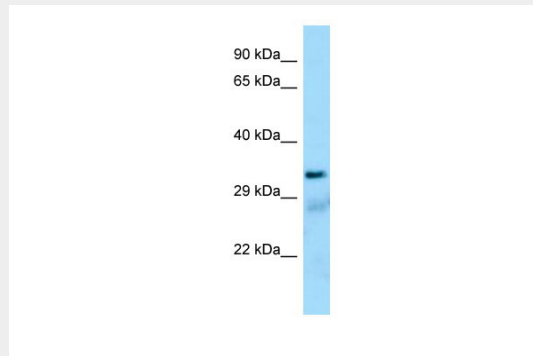
Cellular Location

Mitochondrion {ECO:0000255|HAMAP-Rule:MF_03222}.

SUCLG1 antibody - N-terminal region - Protocols

Provided below are standard protocols that you may find useful for product applications.

- [Western Blot](#)
- [Blocking Peptides](#)
- [Dot Blot](#)
- [Immunohistochemistry](#)
- [Immunofluorescence](#)
- [Immunoprecipitation](#)
- [Flow Cytometry](#)
- [Cell Culture](#)

SUCLG1 antibody - N-terminal region - Images

Host: Rabbit

Target Name: SUCLG1

Antibody Dilution: 1.0µg/ml

Sample Tissue: Human Lung

SUCLG1 antibody - N-terminal region - References

Hillier L.W., et al. Nature 434:724-731(2005).

Tews K.N., et al. Submitted (JUL-2000) to the EMBL/GenBank/DDBJ databases.

James M., et al. Biochim. Biophys. Acta 1360:169-176(1997).

Ostergaard E., et al. Am. J. Hum. Genet. 81:383-387(2007).

Choudhary C., et al. Science 325:834-840(2009).