

PHOSPHO1 antibody - C-terminal region
Rabbit Polyclonal Antibody
Catalog # AI15222

Specification

PHOSPHO1 antibody - C-terminal region - Product Information

Application	WB
Primary Accession	Q8TCT1
Other Accession	NM_001143804 , NP_001137276
Reactivity	Human, Mouse, Rat, Rabbit, Pig, Horse, Bovine, Dog
Predicted	Human, Mouse, Rat, Rabbit, Pig, Horse, Bovine, Dog
Host	Rabbit
Clonality	Polyclonal
Calculated MW	32kDa KDa

PHOSPHO1 antibody - C-terminal region - Additional Information

Gene ID 162466

Other Names

Phosphoethanolamine/phosphocholine phosphatase, 3.1.3.75, PHOSPHO1

Target/Specificity

This antibody is 100% homologous to both isoforms of human PHOSPHO1.

Format

Liquid. Purified antibody supplied in 1x PBS buffer with 0.09% (w/v) sodium azide and 2% sucrose.

Reconstitution & Storage

Add 50 ul of distilled water. Final anti-PHOSPHO1 antibody concentration is 1 mg/ml in PBS buffer with 2% sucrose. For longer periods of storage, store at 20°C. Avoid repeat freeze-thaw cycles.

Precautions

PHOSPHO1 antibody - C-terminal region is for research use only and not for use in diagnostic or therapeutic procedures.

PHOSPHO1 antibody - C-terminal region - Protein Information

Name PHOSPHO1 {ECO:0000303|PubMed:12464021, ECO:0000312|HGNC:HGNC:16815}

Function

Phosphatase that has a high activity toward phosphoethanolamine (PEA) and phosphocholine (PCho) (PubMed:15175005). Involved in the generation of inorganic phosphate for bone mineralization (By similarity). Acts in a non-redundant manner with PHOSPHO1 in skeletal mineralization: while PHOSPHO1 mediates the initiation of hydroxyapatite crystallization in the

matrix vesicles (MVs), ALPL/TNAP catalyzes the spread of hydroxyapatite crystallization in the extracellular matrix (By similarity).

Cellular Location

Extracellular vesicle {ECO:0000250|UniProtKB:Q8R2H9}. Note=Localizes to special class of extracellular vesicles, named matrix vesicles (MVs), which are released by osteogenic cells. {ECO:0000250|UniProtKB:Q8R2H9}

Tissue Location

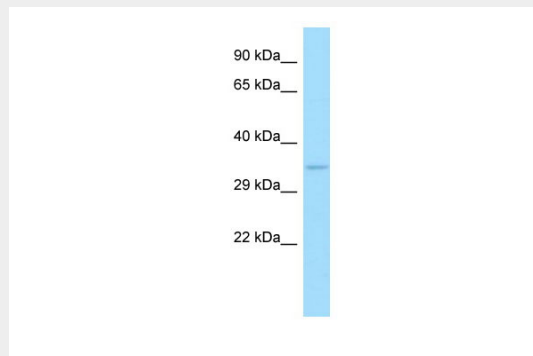
Expressed at sites of mineralization in bone and cartilage. Highly expressed in osteoblast cell line SaOS-2 which produces a mineralized matrix, but not in MG-63 cell line, which do not mineralize.

PHOSPHO1 antibody - C-terminal region - Protocols

Provided below are standard protocols that you may find useful for product applications.

- [Western Blot](#)
- [Blocking Peptides](#)
- [Dot Blot](#)
- [Immunohistochemistry](#)
- [Immunofluorescence](#)
- [Immunoprecipitation](#)
- [Flow Cytometry](#)
- [Cell Culture](#)

PHOSPHO1 antibody - C-terminal region - Images



Host: Rabbit
Target Name: PHOSPHO1
Antibody Dilution: 1.0µg/ml
Sample Tissue: Hela cell lysate

PHOSPHO1 antibody - C-terminal region - References

Houston B., et al. Anim. Genet. 33:451-454(2002).
Roberts S.J., et al. Biochem. Biophys. Res. Commun. 371:872-876(2008).
Zody M.C., et al. Nature 440:1045-1049(2006).
Roberts S.J., et al. Biochem. J. 382:59-65(2004).
Houston B., et al. Bone 34:629-637(2004).