

LILRA3 Antibody - C-terminal region
Rabbit Polyclonal Antibody
Catalog # AI15215

Specification

LILRA3 Antibody - C-terminal region - Product Information

Application	WB
Primary Accession	O8N6C8
Other Accession	NM_006865 , NP_006856
Reactivity	Human, Bovine
Predicted	Human, Bovine
Host	Rabbit
Clonality	Polyclonal
Calculated MW	45kDa KDa

LILRA3 Antibody - C-terminal region - Additional Information

Gene ID 11026

Alias Symbol **CD85E, HM31, HM43, ILT6, LIR-4, LIR4, e3**

Other Names

Leukocyte immunoglobulin-like receptor subfamily A member 3, CD85 antigen-like family member E, Immunoglobulin-like transcript 6, ILT-6, Leukocyte immunoglobulin-like receptor 4, LIR-4, Monocyte inhibitory receptor HM43/HM31, CD85e, LILRA3, ILT6, LIR4

Format

Liquid. Purified antibody supplied in 1x PBS buffer with 0.09% (w/v) sodium azide and 2% sucrose.

Reconstitution & Storage

Add 50 ul of distilled water. Final anti-LILRA3 antibody concentration is 1 mg/ml in PBS buffer with 2% sucrose. For longer periods of storage, store at 20°C. Avoid repeat freeze-thaw cycles.

Precautions

LILRA3 Antibody - C-terminal region is for research use only and not for use in diagnostic or therapeutic procedures.

LILRA3 Antibody - C-terminal region - Protein Information

Name LILRA3

Synonyms ILT6, LIR4

Function

Acts as a soluble receptor for class I MHC antigens. Binds both classical and non-classical HLA class I molecules but with reduced affinities compared to LILRB1 or LILRB2. Binds with high affinity to the surface of monocytes, leading to abolish LPS-induced TNF-alpha production by monocytes.

Cellular Location

Secreted.

Tissue Location

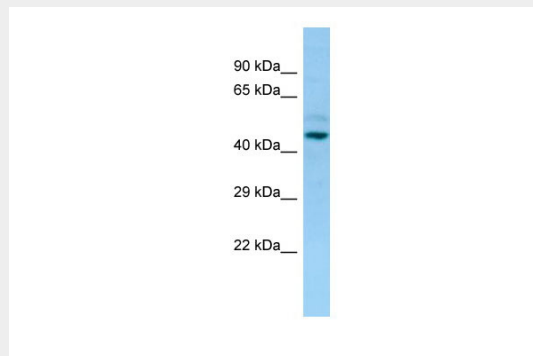
Detected in B-cells, and at lower levels in natural killer (NK) cells. Detected in peripheral blood monocytes and lung

LILRA3 Antibody - C-terminal region - Protocols

Provided below are standard protocols that you may find useful for product applications.

- [Western Blot](#)
- [Blocking Peptides](#)
- [Dot Blot](#)
- [Immunohistochemistry](#)
- [Immunofluorescence](#)
- [Immunoprecipitation](#)
- [Flow Cytometry](#)
- [Cell Culture](#)

LILRA3 Antibody - C-terminal region - Images



WB Suggested Anti-LILRA3 Antibody Titration: 1.0 µg/ml

Positive Control: OVCAR-3 Whole Cell LILRA3 is supported by BioGPS gene expression data to be expressed in OVCAR3

LILRA3 Antibody - C-terminal region - References

- Arm J.P., et al. J. Immunol. 159:2342-2349(1997).
Borges L., et al. J. Immunol. 159:5192-5196(1997).
Samaridis J., et al. Eur. J. Immunol. 27:660-665(1997).
Grimwood J., et al. Nature 428:529-535(2004).
Norman P.J., et al. Immunogenetics 55:165-171(2003).