

AP1M1 antibody - C-terminal region
Rabbit Polyclonal Antibody
Catalog # AI15208**Specification**

AP1M1 antibody - C-terminal region - Product Information

Application	WB
Primary Accession	O9BXS5
Other Accession	NM_032493 , NP_115882
Reactivity	Human, Mouse, Rat, Rabbit, Pig, Horse, Yeast, Bovine, Guinea Pig, Dog
Predicted	Human, Mouse, Rat, Rabbit, Pig, Horse, Yeast, Bovine, Guinea Pig, Dog
Host	Rabbit
Clonality	Polyclonal
Calculated MW	48kDa kDa

AP1M1 antibody - C-terminal region - Additional Information**Gene ID** 8907**Alias Symbol** AP47, CLAPM2, CLTNM, MU-1A**Other Names**

AP-1 complex subunit mu-1, AP-mu chain family member mu1A, Adaptor protein complex AP-1 subunit mu-1, Adaptor-related protein complex 1 subunit mu-1, Clathrin assembly protein complex 1 mu-1 medium chain 1, Clathrin coat assembly protein AP47, Clathrin coat-associated protein AP47, Golgi adaptor HA1/AP1 adaptin mu-1 subunit, Mu-adaptin 1, Mu1A-adaptin, AP1M1, CLTNM

Format

Liquid. Purified antibody supplied in 1x PBS buffer with 0.09% (w/v) sodium azide and 2% sucrose.

Reconstitution & Storage

Add 50 ul of distilled water. Final anti-AP1M1 antibody concentration is 1 mg/ml in PBS buffer with 2% sucrose. For longer periods of storage, store at 20°C. Avoid repeat freeze-thaw cycles.

Precautions

AP1M1 antibody - C-terminal region is for research use only and not for use in diagnostic or therapeutic procedures.

AP1M1 antibody - C-terminal region - Protein Information**Name** AP1M1**Synonyms** CLTNM**Function**

Subunit of clathrin-associated adaptor protein complex 1 that plays a role in protein sorting in the trans-Golgi network (TGN) and endosomes. The AP complexes mediate the recruitment of clathrin

to membranes and the recognition of sorting signals within the cytosolic tails of transmembrane cargo molecules.

Cellular Location

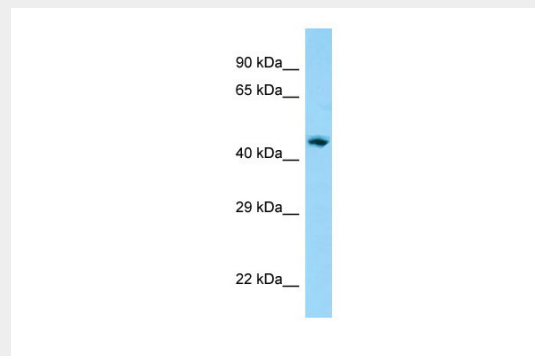
Golgi apparatus. Cytoplasmic vesicle, clathrin-coated vesicle membrane; Peripheral membrane protein; Cytoplasmic side Note=Component of the coat surrounding the cytoplasmic face of coated vesicles located at the Golgi complex

AP1M1 antibody - C-terminal region - Protocols

Provided below are standard protocols that you may find useful for product applications.

- [Western Blot](#)
- [Blocking Peptides](#)
- [Dot Blot](#)
- [Immunohistochemistry](#)
- [Immunofluorescence](#)
- [Immunoprecipitation](#)
- [Flow Cytometry](#)
- [Cell Culture](#)

AP1M1 antibody - C-terminal region - Images



Host: Rabbit
Target Name: AP1M1
Antibody Dilution: 1.0µg/ml
Sample Tissue: Human Lung

AP1M1 antibody - C-terminal region - References

Qu X., et al. Submitted (JUL-2000) to the EMBL/GenBank/DDBJ databases.
Zhang H.-T., et al. Submitted (MAY-2005) to the EMBL/GenBank/DDBJ databases.
Grimwood J., et al. Nature 428:529-535(2004).
Bienvenut W.V., et al. Submitted (JAN-2006) to UniProtKB.
Burkard T.R., et al. BMC Syst. Biol. 5:17-17(2011).