

DDA1 antibody - middle region
Rabbit Polyclonal Antibody
Catalog # AI15204**Specification**

DDA1 antibody - middle region - Product Information

Application	WB
Primary Accession	O9BW61
Other Accession	NM_024050 , NP_076955
Reactivity	Human, Mouse, Rat, Horse, Bovine, Guinea Pig, Dog
Predicted	Human, Mouse, Rat, Pig, Horse, Bovine, Guinea Pig, Dog
Host	Rabbit
Clonality	Polyclonal
Calculated MW	12kDa kDa

DDA1 antibody - middle region - Additional Information**Gene ID** 79016**Alias Symbol** **C19orf58, MGC2594, PCIA1****Other Names**

DET1- and DDB1-associated protein 1, Placenta cross-immune reaction antigen 1, PCIA-1, DDA1, C19orf58, PCIA1

Format

Liquid. Purified antibody supplied in 1x PBS buffer with 0.09% (w/v) sodium azide and 2% sucrose.

Reconstitution & Storage

Add 50 ul of distilled water. Final anti-DDA1 antibody concentration is 1 mg/ml in PBS buffer with 2% sucrose. For longer periods of storage, store at 20°C. Avoid repeat freeze-thaw cycles.

Precautions

DDA1 antibody - middle region is for research use only and not for use in diagnostic or therapeutic procedures.

DDA1 antibody - middle region - Protein Information**Name** DDA1 {ECO:0000303|PubMed:17452440, ECO:0000312|HGNC:HGNC:28360}**Function**

Functions as a component of numerous distinct DCX (DDB1-CUL4- X-box) E3 ubiquitin-protein ligase complexes which mediate the ubiquitination and subsequent proteasomal degradation of target proteins (PubMed:17452440, PubMed:28302793, PubMed:28437394, PubMed:31686031)

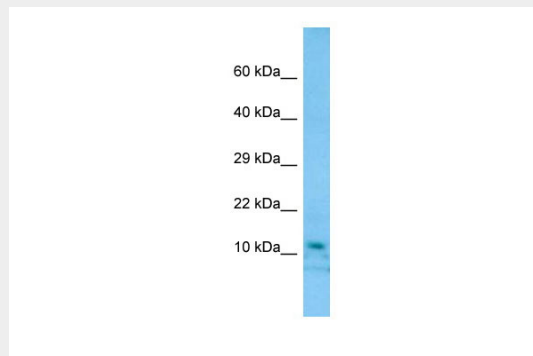
target="_blank">31686031, PubMed:31819272). In the DCX complexes, acts as a scaffolding subunit required to stabilize the complex (PubMed:31686031, PubMed:31819272).

DDA1 antibody - middle region - Protocols

Provided below are standard protocols that you may find useful for product applications.

- [Western Blot](#)
- [Blocking Peptides](#)
- [Dot Blot](#)
- [Immunohistochemistry](#)
- [Immunofluorescence](#)
- [Immunoprecipitation](#)
- [Flow Cytometry](#)
- [Cell Culture](#)

DDA1 antibody - middle region - Images



Host: Rabbit

Target Name: DDA1

Antibody Dilution: 1.0µg/ml

Sample Tissue: 721_B cell lysate

DDA1 is supported by BioGPS gene expression data to be expressed in 721_B

DDA1 antibody - middle region - References

- Pick E., et al. Mol. Cell. Biol. 27:4708-4719(2007).
Deng H.-X., et al. Submitted (DEC-2004) to the EMBL/GenBank/DDBJ databases.
Mural R.J., et al. Submitted (SEP-2005) to the EMBL/GenBank/DDBJ databases.
Dephoure N., et al. Proc. Natl. Acad. Sci. U.S.A. 105:10762-10767(2008).
Olsen J.V., et al. Sci. Signal. 3:RA3-RA3(2010).