

P2RY14 antibody - C-terminal region
Rabbit Polyclonal Antibody
Catalog # AI15202**Specification**

P2RY14 antibody - C-terminal region - Product Information

Application	WB
Primary Accession	O15391
Other Accession	NM_014879 , NP_055694
Reactivity	Human, Mouse, Rat, Rabbit, Pig, Bovine, Dog
Predicted	Human, Mouse, Rat, Rabbit, Pig, Bovine, Dog
Host	Rabbit
Clonality	Polyclonal
Calculated MW	39kDa KDa

P2RY14 antibody - C-terminal region - Additional Information**Gene ID** 9934**Alias Symbol** **GPR105, KIAA0001, P2Y14****Other Names**

P2Y purinoceptor 14, P2Y14, G-protein coupled receptor 105, UDP-glucose receptor, P2RY14, GPR105, KIAA0001

Format

Liquid. Purified antibody supplied in 1x PBS buffer with 0.09% (w/v) sodium azide and 2% sucrose.

Reconstitution & Storage

Add 50 ul of distilled water. Final anti-P2RY14 antibody concentration is 1 mg/ml in PBS buffer with 2% sucrose. For longer periods of storage, store at 20°C. Avoid repeat freeze-thaw cycles.

Precautions

P2RY14 antibody - C-terminal region is for research use only and not for use in diagnostic or therapeutic procedures.

P2RY14 antibody - C-terminal region - Protein Information**Name** P2RY14**Synonyms** GPR105, KIAA0001**Function**

Receptor for UDP-glucose and other UDP-sugar coupled to G- proteins. Not activated by ATP, ADP, UTP or ATP.

Cellular Location

Cell membrane; Multi-pass membrane protein.

Tissue Location

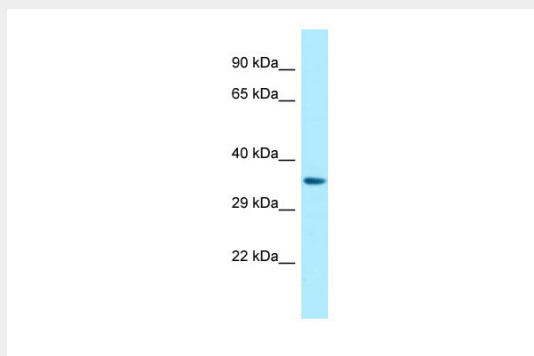
Highest expression in the placenta, adipose tissue, stomach and intestine, intermediate levels in the brain, spleen, lung and heart, lowest levels in the kidney

P2RY14 antibody - C-terminal region - Protocols

Provided below are standard protocols that you may find useful for product applications.

- [Western Blot](#)
- [Blocking Peptides](#)
- [Dot Blot](#)
- [Immunohistochemistry](#)
- [Immunofluorescence](#)
- [Immunoprecipitation](#)
- [Flow Cytometry](#)
- [Cell Culture](#)

P2RY14 antibody - C-terminal region - Images



WB Suggested Anti-P2RY14 Antibody Titration: 1.0 μ g/ml

Positive Control: Fetal Heart

P2RY14 antibody - C-terminal region - References

- Joensuu T., et al. Am. J. Hum. Genet. 69:673-684(2001).
Nomura N., et al. DNA Res. 1:27-35(1994).
Chambers J.K., et al. J. Biol. Chem. 275:10767-10771(2000).
Sjoebloom T., et al. Science 314:268-274(2006).