

RPL15 antibody - N-terminal region
Rabbit Polyclonal Antibody
Catalog # AI15197**Specification**

RPL15 antibody - N-terminal region - Product Information

Application	WB
Primary Accession	P61313
Other Accession	NM_002948 , NP_002939
Reactivity	Human, Mouse, Rat, Rabbit, Goat, Horse, Yeast, Bovine, Guinea Pig, Dog
Predicted	Human, Mouse, Rat, Rabbit, Pig, Goat, Horse, Yeast, Bovine, Guinea Pig, Dog
Host	Rabbit
Clonality	Polyclonal
Calculated MW	24kDa KDa

RPL15 antibody - N-terminal region - Additional Information**Gene ID** 6138**Alias Symbol** EC45, FLJ26304, MGC88603, RPL10, RPLY10, RPYL10**Other Names**
60S ribosomal protein L15, RPL15, EC45**Format**

Liquid. Purified antibody supplied in 1x PBS buffer with 0.09% (w/v) sodium azide and 2% sucrose.

Reconstitution & Storage

Add 50 ul of distilled water. Final anti-RPL15 antibody concentration is 1 mg/ml in PBS buffer with 2% sucrose. For longer periods of storage, store at 20°C. Avoid repeat freeze-thaw cycles.

Precautions

RPL15 antibody - N-terminal region is for research use only and not for use in diagnostic or therapeutic procedures.

RPL15 antibody - N-terminal region - Protein Information**Name** RPL15**Synonyms** EC45**Function**

Component of the large ribosomal subunit. The ribosome is a large ribonucleoprotein complex responsible for the synthesis of proteins in the cell.

Cellular Location

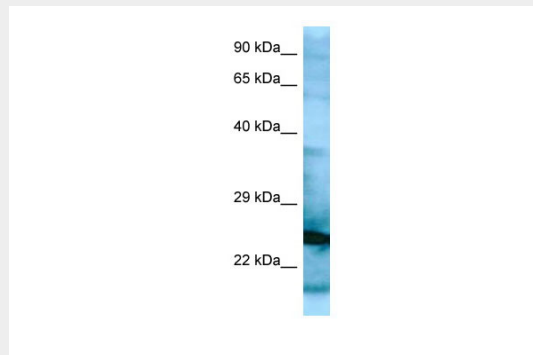
Cytoplasm.

RPL15 antibody - N-terminal region - Protocols

Provided below are standard protocols that you may find useful for product applications.

- [Western Blot](#)
- [Blocking Peptides](#)
- [Dot Blot](#)
- [Immunohistochemistry](#)
- [Immunofluorescence](#)
- [Immunoprecipitation](#)
- [Flow Cytometry](#)
- [Cell Culture](#)

RPL15 antibody - N-terminal region - Images



WB Suggested Anti-RPL15 Antibody Titration: 1.0 µg/ml
Positive Control: HepG2 Whole Cell

RPL15 antibody - N-terminal region - References

Herzog H., et al. Submitted (NOV-1993) to the EMBL/GenBank/DDBJ databases.
Wang Q., et al. Submitted (JUN-2000) to the EMBL/GenBank/DDBJ databases.
Yoshihama M., et al. Submitted (MAY-2001) to the EMBL/GenBank/DDBJ databases.
Lu L., et al. Submitted (JUL-2003) to the EMBL/GenBank/DDBJ databases.
Villalon D.K., et al. Submitted (SEP-2000) to the EMBL/GenBank/DDBJ databases.