

**CTDSP1 Antibody - N-terminal region**  
**Rabbit Polyclonal Antibody**  
**Catalog # AI15185****Specification**

---

**CTDSP1 Antibody - N-terminal region - Product Information**

Application	WB
Primary Accession	<a href="#">O9GZU7</a>
Other Accession	<a href="#">NM_021198</a> , <a href="#">NP_067021</a>
Reactivity	Human, Mouse, Rat, Rabbit, Bovine, Guinea Pig, Dog
Predicted	Human, Mouse, Rat, Rabbit, Pig, Bovine, Guinea Pig, Dog
Host	Rabbit
Clonality	Polyclonal
Calculated MW	29kDa kDa

**CTDSP1 Antibody - N-terminal region - Additional Information****Gene ID** 58190**Alias Symbol** NLIIF, SCP1, NIF3, NLI-IF**Other Names**

Carboxy-terminal domain RNA polymerase II polypeptide A small phosphatase 1, 3.1.3.16, Nuclear LIM interactor-interacting factor 3, NLI-IF, NLI-interacting factor 3, Small C-terminal domain phosphatase 1, SCP1, Small CTD phosphatase 1, CTDSP1, NIF3, NLIIF, SCP1

**Format**

Liquid. Purified antibody supplied in 1x PBS buffer with 0.09% (w/v) sodium azide and 2% sucrose.

**Reconstitution & Storage**

Add 50 ul of distilled water. Final anti-CTDSP1 antibody concentration is 1 mg/ml in PBS buffer with 2% sucrose. For longer periods of storage, store at 20°C. Avoid repeat freeze-thaw cycles.

**Precautions**

CTDSP1 Antibody - N-terminal region is for research use only and not for use in diagnostic or therapeutic procedures.

**CTDSP1 Antibody - N-terminal region - Protein Information****Name** CTDSP1**Synonyms** NIF3, NLIIF, SCP1**Function**

Preferentially catalyzes the dephosphorylation of 'Ser-5' within the tandem 7 residue repeats in the C-terminal domain (CTD) of the largest RNA polymerase II subunit POLR2A. Negatively regulates RNA polymerase II transcription, possibly by controlling the transition from

initiation/capping to processive transcript elongation. Recruited by REST to neuronal genes that contain RE-1 elements, leading to neuronal gene silencing in non-neuronal cells.

#### Cellular Location

Nucleus. Note=Colocalizes with RNA polymerase II

#### Tissue Location

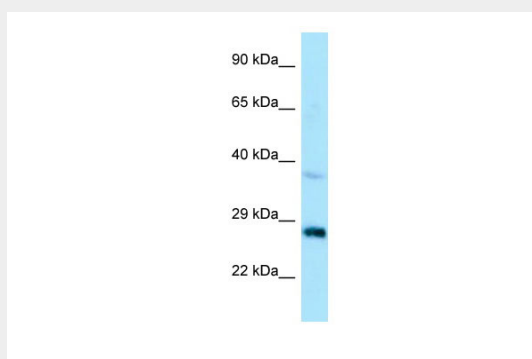
Expression is restricted to non-neuronal tissues. Highest expression in skeletal muscle, spleen, lung and placenta

### CTDSP1 Antibody - N-terminal region - Protocols

Provided below are standard protocols that you may find useful for product applications.

- [Western Blot](#)
- [Blocking Peptides](#)
- [Dot Blot](#)
- [Immunohistochemistry](#)
- [Immunofluorescence](#)
- [Immunoprecipitation](#)
- [Flow Cytometry](#)
- [Cell Culture](#)

### CTDSP1 Antibody - N-terminal region - Images



WB Suggested Anti-CTDSP1 Antibody Titration: 1.0 µg/ml

Positive Control: HepG2 Whole CellCTDSP1 is supported by BioGPS gene expression data to be expressed in HepG2

### CTDSP1 Antibody - N-terminal region - References

- Marquet S.,et al.Mamm. Genome 11:755-762(2000).  
Yeo M.,et al.J. Biol. Chem. 278:26078-26085(2003).  
Li W.B.,et al.Submitted (APR-2003) to the EMBL/GenBank/DDBJ databases.  
Hillier L.W.,et al.Nature 434:724-731(2005).  
Yeo M.,et al.Science 307:596-600(2005).