

**MMP28 antibody - C-terminal region**  
**Rabbit Polyclonal Antibody**  
**Catalog # AI15157****Specification**

---

**MMP28 antibody - C-terminal region - Product Information**

Application	WB
Primary Accession	<a href="#">O9H239</a>
Other Accession	<a href="#">NM_024302</a> , <a href="#">NP_077278</a>
Reactivity	Human, Horse, Bovine, Dog
Predicted	Human, Horse, Bovine, Dog
Host	Rabbit
Clonality	Polyclonal
Calculated MW	45kDa KDa

**MMP28 antibody - C-terminal region - Additional Information****Gene ID** 79148**Alias Symbol** **EPILYSIN, MM28, MMP-28, MMP25****Other Names**

Matrix metalloproteinase-28, MMP-28, 3.4.24.-, Epilysin, MMP28, MMP25

**Format**

Liquid. Purified antibody supplied in 1x PBS buffer with 0.09% (w/v) sodium azide and 2% sucrose.

**Reconstitution & Storage**

Add 50 ul of distilled water. Final anti-MMP28 antibody concentration is 1 mg/ml in PBS buffer with 2% sucrose. For longer periods of storage, store at 20°C. Avoid repeat freeze-thaw cycles.

**Precautions**

MMP28 antibody - C-terminal region is for research use only and not for use in diagnostic or therapeutic procedures.

**MMP28 antibody - C-terminal region - Protein Information****Name** MMP28**Synonyms** MMP25**Function**

Can degrade casein. Could play a role in tissues homeostasis and repair.

**Cellular Location**

Secreted, extracellular space, extracellular matrix

**Tissue Location**

Expressed at high levels in testes and lung. Low levels are detected in kidney, pancreas and skin.

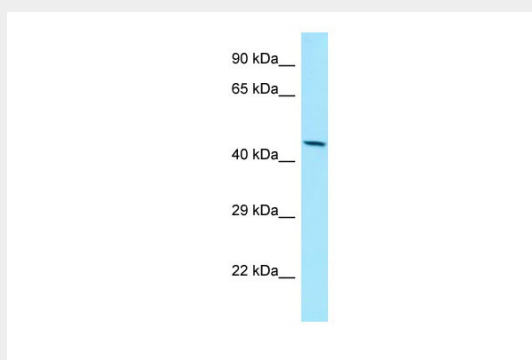
Also expressed in fetal lung, brain, skeletal muscle and kidney. Expressed selectively in keratinocytes. Widely expressed in several carcinomas as well. Is up-regulated in response to injury in the skin

### MMP28 antibody - C-terminal region - Protocols

Provided below are standard protocols that you may find useful for product applications.

- [Western Blot](#)
- [Blocking Peptides](#)
- [Dot Blot](#)
- [Immunohistochemistry](#)
- [Immunofluorescence](#)
- [Immunoprecipitation](#)
- [Flow Cytometry](#)
- [Cell Culture](#)

### MMP28 antibody - C-terminal region - Images



WB Suggested Anti-MMP28 Antibody Titration: 1.0  $\mu$ g/ml

Positive Control: HepG2 Whole Cell

### MMP28 antibody - C-terminal region - References

- Marchenko G.N., et al. Gene 265:87-93(2001).  
Lohi J., et al. J. Biol. Chem. 276:10134-10144(2001).  
Southan C., et al. Submitted (DEC-2000) to the EMBL/GenBank/DDBJ databases.  
Clark H.F., et al. Genome Res. 13:2265-2270(2003).  
Zody M.C., et al. Nature 440:1045-1049(2006).