

**GPR65 antibody - C-terminal region**  
**Rabbit Polyclonal Antibody**  
**Catalog # AI15156**

**Specification**

---

**GPR65 antibody - C-terminal region - Product Information**

Application	WB
Primary Accession	<a href="#">Q8IYL9</a>
Other Accession	<a href="#">NM_003608</a> , <a href="#">NP_003599</a>
Reactivity	Human, Mouse, Rat, Rabbit, Pig, Horse, Dog
Predicted	Human, Mouse, Rat, Rabbit, Pig, Horse, Dog
Host	Rabbit
Clonality	Polyclonal
Calculated MW	39kDa KDa

**GPR65 antibody - C-terminal region - Additional Information**

**Gene ID** 8477

**Alias Symbol** TDAG8, hTDAG8  
**Other Names**  
Psychosine receptor, G-protein coupled receptor 65, T-cell death-associated gene 8 protein, GPR65, TDAG8

**Format**  
Liquid. Purified antibody supplied in 1x PBS buffer with 0.09% (w/v) sodium azide and 2% sucrose.

**Reconstitution & Storage**  
Add 50 ul of distilled water. Final anti-GPR65 antibody concentration is 1 mg/ml in PBS buffer with 2% sucrose. For longer periods of storage, store at 20°C. Avoid repeat freeze-thaw cycles.

**Precautions**  
GPR65 antibody - C-terminal region is for research use only and not for use in diagnostic or therapeutic procedures.

**GPR65 antibody - C-terminal region - Protein Information**

**Name** GPR65

**Synonyms** TDAG8

**Function**  
Receptor for the glycosphingolipid psychosine (PSY) and several related glycosphingolipids (PubMed:[11309421](http://www.uniprot.org/citations/11309421)). Plays a role in immune response by maintaining lysosome function and supporting phagocytosis-mediated intracellular bacteria clearance (PubMed:

<http://www.uniprot.org/citations/27287411>). May have a role in activation-induced cell death or differentiation of T-cells (By similarity).

#### Cellular Location

Cell membrane; Multi-pass membrane protein

#### Tissue Location

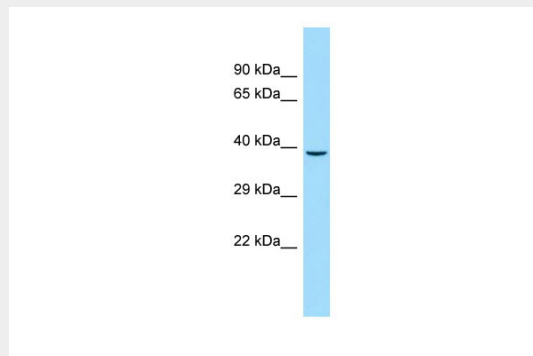
Predominantly expressed in thymus, spleen, lymph nodes, small intestine, lung, placenta and peripheral blood leukocytes

### GPR65 antibody - C-terminal region - Protocols

Provided below are standard protocols that you may find useful for product applications.

- [Western Blot](#)
- [Blocking Peptides](#)
- [Dot Blot](#)
- [Immunohistochemistry](#)
- [Immunofluorescence](#)
- [Immunoprecipitation](#)
- [Flow Cytometry](#)
- [Cell Culture](#)

### GPR65 antibody - C-terminal region - Images



WB Suggested Anti-GPR65 Antibody Titration: 1.0 µg/ml  
Positive Control: U937 Whole Cell

### GPR65 antibody - C-terminal region - References

Kyaw H., et al. DNA Cell Biol. 17:493-500(1998).  
Heilig R., et al. Nature 421:601-607(2003).  
Im D.-S., et al. J. Cell Biol. 153:429-434(2001).