

MMP25 antibody - middle region
Rabbit Polyclonal Antibody
Catalog # AI15130**Specification**

MMP25 antibody - middle region - Product Information

Application	WB
Primary Accession	O9NPA2
Other Accession	NM_022468 , NP_071913
Reactivity	Human, Mouse, Rat, Rabbit, Horse, Guinea Pig, Dog
Predicted	Human, Mouse, Rat, Rabbit, Pig, Horse, Guinea Pig, Dog
Host	Rabbit
Clonality	Polyclonal
Calculated MW	48kDa KDa

MMP25 antibody - middle region - Additional Information**Gene ID** 64386**Alias Symbol** MMP20, MMP20A, MMPL1, MT-MMP6, MT6-MMP**Other Names**

Matrix metalloproteinase-25, MMP-25, 3.4.24.-, Leukolysin, Membrane-type matrix metalloproteinase 6, MT-MMP 6, MTMMP6, Membrane-type-6 matrix metalloproteinase, MT6-MMP, MT6MMP, MMP25, MMP20, MMPL1, MT6MMP

Format

Liquid. Purified antibody supplied in 1x PBS buffer with 0.09% (w/v) sodium azide and 2% sucrose.

Reconstitution & Storage

Add 50 ul of distilled water. Final anti-MMP25 antibody concentration is 1 mg/ml in PBS buffer with 2% sucrose. For longer periods of storage, store at 20°C. Avoid repeat freeze-thaw cycles.

Precautions

MMP25 antibody - middle region is for research use only and not for use in diagnostic or therapeutic procedures.

MMP25 antibody - middle region - Protein Information**Name** MMP25**Synonyms** MMP20, MMPL1, MT6MMP**Function**

May activate progelatinase A.

Cellular Location

Cell membrane; Lipid-anchor, GPI-anchor; Extracellular side. Secreted, extracellular space, extracellular matrix

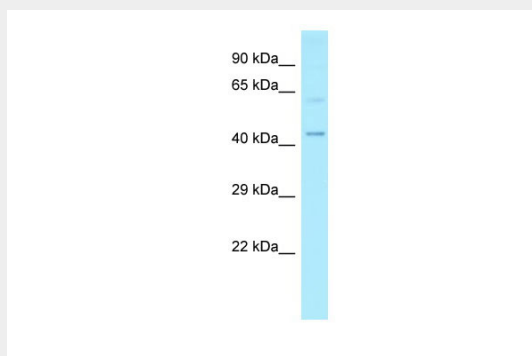
Tissue Location

Expressed predominantly in leukocytes, lung and spleen. Expressed also in colon carcinoma, astrocytoma and glioblastomas

MMP25 antibody - middle region - Protocols

Provided below are standard protocols that you may find useful for product applications.

- [Western Blot](#)
- [Blocking Peptides](#)
- [Dot Blot](#)
- [Immunohistochemistry](#)
- [Immunofluorescence](#)
- [Immunoprecipitation](#)
- [Flow Cytometry](#)
- [Cell Culture](#)

MMP25 antibody - middle region - Images

WB Suggested Anti-MMP25 Antibody Titration: 1.0 µg/ml
Positive Control: Hela Whole Cell

MMP25 antibody - middle region - References

Velasco G., et al. *Cancer Res.* 60:877-882(2000).
Pei D.Q., et al. *Cell Res.* 9:291-303(1999).
Kojima S., et al. *FEBS Lett.* 480:142-146(2000).
de Saint-Vis B.M., et al. Submitted (FEB-2000) to the EMBL/GenBank/DDBJ databases.
Mural R.J., et al. Submitted (SEP-2005) to the EMBL/GenBank/DDBJ databases.