

ITGA5 antibody - C-terminal region
Rabbit Polyclonal Antibody
Catalog # AI15129**Specification**

ITGA5 antibody - C-terminal region - Product Information

Application	WB
Primary Accession	P08648
Other Accession	NM_002205 , NP_002196
Reactivity	Human, Mouse
Predicted	Human, Mouse
Host	Rabbit
Clonality	Polyclonal
Calculated MW	110kDa KDa

ITGA5 antibody - C-terminal region - Additional Information**Gene ID** 3678**Alias Symbol** CD49e, FNRA, VLA5A**Other Names**

Integrin alpha-5, CD49 antigen-like family member E, Fibronectin receptor subunit alpha, Integrin alpha-F, VLA-5, CD49e, Integrin alpha-5 heavy chain, Integrin alpha-5 light chain, ITGA5, FNRA

Format

Liquid. Purified antibody supplied in 1x PBS buffer with 0.09% (w/v) sodium azide and 2% sucrose.

Reconstitution & Storage

Add 50 ul of distilled water. Final anti-ITGA5 antibody concentration is 1 mg/ml in PBS buffer with 2% sucrose. For longer periods of storage, store at 20°C. Avoid repeat freeze-thaw cycles.

Precautions

ITGA5 antibody - C-terminal region is for research use only and not for use in diagnostic or therapeutic procedures.

ITGA5 antibody - C-terminal region - Protein Information**Name** ITGA5 ([HGNC:6141](#))**Synonyms** FNRA**Function**Integrin alpha-5/beta-1 (ITGA5:ITGB1) is a receptor for fibronectin and fibrinogen. It recognizes the sequence R-G-D in its ligands. ITGA5:ITGB1 binds to PLA2G2A via a site (site 2) which is distinct from the classical ligand-binding site (site 1) and this induces integrin conformational changes and enhanced ligand binding to site 1 (PubMed: [18635536](http://www.uniprot.org/citations/18635536), PubMed: [25398877](http://www.uniprot.org/citations/25398877)). ITGA5:ITGB1 acts as a receptor for fibrillin-1 (FBN1) and

mediates R-G-D-dependent cell adhesion to FBN1 (PubMed:12807887, PubMed:17158881). ITGA5:ITGB1 acts as a receptor for fibronectin (FN1) and mediates R-G-D-dependent cell adhesion to FN1 (PubMed:33962943). ITGA5:ITGB1 is a receptor for IL1B and binding is essential for IL1B signaling (PubMed:29030430). ITGA5:ITGB3 is a receptor for soluble CD40LG and is required for CD40/CD40LG signaling (PubMed:31331973).

Cellular Location

Cell membrane; Single-pass type I membrane protein. Cell junction, focal adhesion

Tissue Location

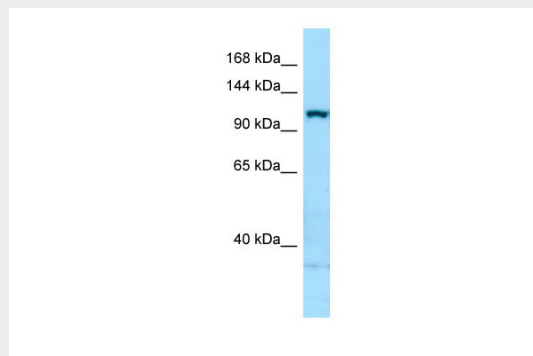
Expressed in placenta (at protein level).

ITGA5 antibody - C-terminal region - Protocols

Provided below are standard protocols that you may find useful for product applications.

- [Western Blot](#)
- [Blocking Peptides](#)
- [Dot Blot](#)
- [Immunohistochemistry](#)
- [Immunofluorescence](#)
- [Immunoprecipitation](#)
- [Flow Cytometry](#)
- [Cell Culture](#)

ITGA5 antibody - C-terminal region - Images



WB Suggested Anti-ITGA5 Antibody Titration: 1.0 µg/ml
Positive Control: MDA-MB-435S Whole Cell

ITGA5 antibody - C-terminal region - References

- Argaves W.S., et al. J. Cell Biol. 105:1183-1190(1987).
Birkenmeier T.M., et al. J. Biol. Chem. 266:20544-20549(1991).
Fitzgerald L.A., et al. Biochemistry 26:8158-8165(1987).
Argaves W.S., et al. J. Biol. Chem. 261:12922-12924(1986).
Takada Y., et al. Proc. Natl. Acad. Sci. U.S.A. 84:3239-3243(1987).