

DMGDH antibody - C-terminal region
Rabbit Polyclonal Antibody
Catalog # AI15127**Specification**

DMGDH antibody - C-terminal region - Product Information

Application	WB
Primary Accession	O9UI17
Other Accession	NM_013391 , NP_037523
Reactivity	Human, Rat, Pig, Horse
Predicted	Human, Rat, Pig, Horse
Host	Rabbit
Clonality	Polyclonal
Calculated MW	91kDa KDa

DMGDH antibody - C-terminal region - Additional Information**Gene ID** 29958**Alias Symbol** **DMGDHD, ME2GLYDH**
Other Names
Dimethylglycine dehydrogenase, mitochondrial, 1.5.8.4, ME2GLYDH, DMGDH**Format**

Liquid. Purified antibody supplied in 1x PBS buffer with 0.09% (w/v) sodium azide and 2% sucrose.

Reconstitution & Storage

Add 50 ul of distilled water. Final anti-DMGDH antibody concentration is 1 mg/ml in PBS buffer with 2% sucrose. For longer periods of storage, store at 20°C. Avoid repeat freeze-thaw cycles.

Precautions

DMGDH antibody - C-terminal region is for research use only and not for use in diagnostic or therapeutic procedures.

DMGDH antibody - C-terminal region - Protein Information**Name** DMGDH**Function**

Catalyzes the demethylation of N,N-dimethylglycine to sarcosine. Also has activity with sarcosine in vitro.

Cellular Location

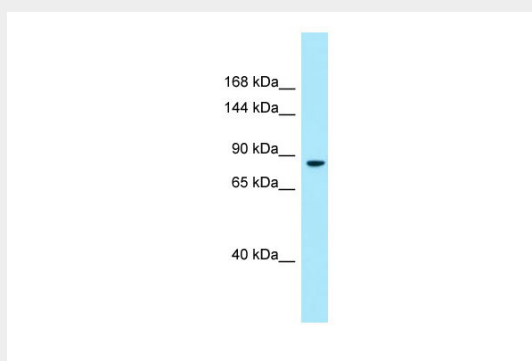
Mitochondrion.

DMGDH antibody - C-terminal region - Protocols

Provided below are standard protocols that you may find useful for product applications.

- [Western Blot](#)
- [Blocking Peptides](#)
- [Dot Blot](#)
- [Immunohistochemistry](#)
- [Immunofluorescence](#)
- [Immunoprecipitation](#)
- [Flow Cytometry](#)
- [Cell Culture](#)

DMGDH antibody - C-terminal region - Images



WB Suggested Anti-DMGDH Antibody Titration: 1.0 µg/ml
Positive Control: Fetal Liver

DMGDH antibody - C-terminal region - References

Binzak B.A., et al. Mol. Genet. Metab. 69:181-187(2000).
Binzak B.A., et al. Am. J. Hum. Genet. 68:839-847(2001).
Ota T., et al. Nat. Genet. 36:40-45(2004).
Schmutz J., et al. Nature 431:268-274(2004).
Moolenaar S.H., et al. Clin. Chem. 45:459-464(1999).