

ELOVL6 antibody - C-terminal region
Rabbit Polyclonal Antibody
Catalog # AI15120**Specification**

ELOVL6 antibody - C-terminal region - Product Information

Application	WB
Primary Accession	O9H5J4
Other Accession	NM_024090 , NP_076995
Reactivity	Human, Mouse, Rat, Rabbit, Bovine, Guinea Pig, Dog
Predicted	Human, Mouse, Rat, Rabbit, Pig, Bovine, Guinea Pig, Dog
Host	Rabbit
Clonality	Polyclonal
Calculated MW	31kDa KDa

ELOVL6 antibody - C-terminal region - Additional Information**Gene ID** 79071**Alias Symbol** FACE, FAE, FLJ23378, LCE, MGC5487**Other Names**

Elongation of very long chain fatty acids protein 6, 2.3.1.199, 3-keto acyl-CoA synthase ELOVL6, ELOVL fatty acid elongase 6, ELOVL FA elongase 6, Fatty acid elongase 2, hELO2, Fatty acyl-CoA elongase, Long-chain fatty-acyl elongase, Very-long-chain 3-oxoacyl-CoA synthase 6, ELOVL6, FACE, LCE

Format

Liquid. Purified antibody supplied in 1x PBS buffer with 0.09% (w/v) sodium azide and 2% sucrose.

Reconstitution & Storage

Add 50 ul of distilled water. Final anti-ELOVL6 antibody concentration is 1 mg/ml in PBS buffer with 2% sucrose. For longer periods of storage, store at 20°C. Avoid repeat freeze-thaw cycles.

Precautions

ELOVL6 antibody - C-terminal region is for research use only and not for use in diagnostic or therapeutic procedures.

ELOVL6 antibody - C-terminal region - Protein Information**Name** ELOVL6 {ECO:0000255|HAMAP-Rule:MF_03206}**Synonyms** FACE, LCE**Function**

Catalyzes the first and rate-limiting reaction of the four reactions that constitute the long-chain fatty acids elongation cycle. This endoplasmic reticulum-bound enzymatic process allows the

addition of 2 carbons to the chain of long- and very long-chain fatty acids (VLCFAs) per cycle. Condensing enzyme that elongates fatty acids with 12, 14 and 16 carbons with higher activity toward C16:0 acyl-CoAs. Catalyzes the synthesis of unsaturated C16 long chain fatty acids and, to a lesser extent, C18:0 and those with low desaturation degree. May participate in the production of saturated and monounsaturated VLCFAs of different chain lengths that are involved in multiple biological processes as precursors of membrane lipids and lipid mediators.

Cellular Location

Endoplasmic reticulum membrane {ECO:0000255|HAMAP-Rule:MF_03206, ECO:0000269|PubMed:20937905}; Multi-pass membrane protein {ECO:0000255|HAMAP-Rule:MF_03206}

Tissue Location

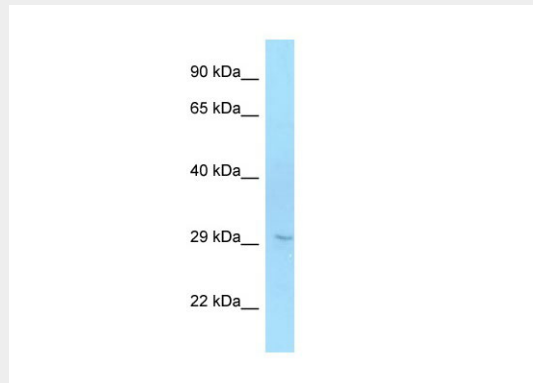
Ubiquitous..

ELOVL6 antibody - C-terminal region - Protocols

Provided below are standard protocols that you may find useful for product applications.

- [Western Blot](#)
- [Blocking Peptides](#)
- [Dot Blot](#)
- [Immunohistochemistry](#)
- [Immunofluorescence](#)
- [Immunoprecipitation](#)
- [Flow Cytometry](#)
- [Cell Culture](#)

ELOVL6 antibody - C-terminal region - Images



WB Suggested Anti-ELOVL6 Antibody Titration: 1.0 μ g/ml

Positive Control: Jurkat Whole Cell

ELOVL6 antibody - C-terminal region - References

- Ota T., et al. Nat. Genet. 36:40-45(2004).
Hillier L.W., et al. Nature 434:724-731(2005).
Ohno Y., et al. Proc. Natl. Acad. Sci. U.S.A. 107:18439-18444(2010).