

**RPS10 antibody - C-terminal region**  
**Rabbit Polyclonal Antibody**  
**Catalog # AI15118****Specification**

---

**RPS10 antibody - C-terminal region - Product Information**

Application	WB
Primary Accession	<a href="#">P46783</a>
Other Accession	<a href="#">NM_001014</a> , <a href="#">NP_001005</a>
Reactivity	Human, Mouse, Rat, Rabbit, Pig, Goat, Horse, Bovine, Guinea Pig, Dog
Predicted	Human, Mouse, Rat, Rabbit, Pig, Goat, Horse, Bovine, Guinea Pig, Dog
Host	Rabbit
Clonality	Polyclonal
Calculated MW	19kDa KDa

**RPS10 antibody - C-terminal region - Additional Information****Gene ID** 6204**Alias Symbol** MGC88819  
**Other Names**  
40S ribosomal protein S10, RPS10**Format**

Liquid. Purified antibody supplied in 1x PBS buffer with 0.09% (w/v) sodium azide and 2% sucrose.

**Reconstitution & Storage**

Add 50 ul of distilled water. Final anti-RPS10 antibody concentration is 1 mg/ml in PBS buffer with 2% sucrose. For longer periods of storage, store at 20°C. Avoid repeat freeze-thaw cycles.

**Precautions**

RPS10 antibody - C-terminal region is for research use only and not for use in diagnostic or therapeutic procedures.

**RPS10 antibody - C-terminal region - Protein Information****Name** RPS10**Function**Component of the 40S ribosomal subunit (PubMed:<<http://www.uniprot.org/citations/23636399>>23636399</a>). The ribosome is a large ribonucleoprotein complex responsible for the synthesis of proteins in the cell (PubMed:<<http://www.uniprot.org/citations/23636399>>23636399</a>).**Cellular Location**

Cytoplasm. Nucleus, nucleolus. Note=Localized in the granular component (GC) region of the

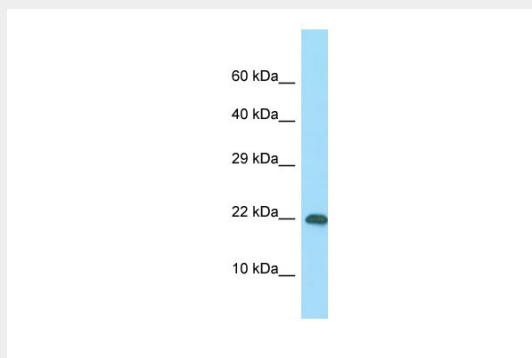
nucleolus. Methylation is required for its localization in the GC region. Colocalizes with NPS1 in the GC region of the nucleolus.

### RPS10 antibody - C-terminal region - Protocols

Provided below are standard protocols that you may find useful for product applications.

- [Western Blot](#)
- [Blocking Peptides](#)
- [Dot Blot](#)
- [Immunohistochemistry](#)
- [Immunofluorescence](#)
- [Immunoprecipitation](#)
- [Flow Cytometry](#)
- [Cell Culture](#)

### RPS10 antibody - C-terminal region - Images



WB Suggested Anti-RPS10 Antibody Titration: 1.0  $\mu$ g/ml

Positive Control: Jurkat Whole Cell There is BioGPS gene expression data showing that RPS10 is expressed in Jurkat

### RPS10 antibody - C-terminal region - References

- Frigerio J.-M., et al. *Biochim. Biophys. Acta* 1262:64-68(1995).  
Ota T., et al. *Nat. Genet.* 36:40-45(2004).  
Mungall A.J., et al. *Nature* 425:805-811(2003).  
Mural R.J., et al. Submitted (JUL-2005) to the EMBL/GenBank/DDBJ databases.  
Vladimirov S.N., et al. *Eur. J. Biochem.* 239:144-149(1996).