

TUBA1A antibody - C-terminal region
Rabbit Polyclonal Antibody
Catalog # AI15115**Specification**

TUBA1A antibody - C-terminal region - Product Information

Application	WB
Primary Accession	Q71U36
Other Accession	NM_006009 , NP_006000
Reactivity	Human, Mouse, Rat, Rabbit, Pig, Sheep, Horse, Bovine, Guinea Pig, Dog
Predicted	Human, Mouse, Rat, Rabbit, Pig, Sheep, Horse, Bovine, Guinea Pig, Dog
Host	Rabbit
Clonality	Polyclonal
Calculated MW	50kDa KDa

TUBA1A antibody - C-terminal region - Additional Information**Gene ID** 7846**Alias Symbol** **B-ALPHA-1, FLJ25113, LIS3, TUBA3****Other Names**

Tubulin alpha-1A chain, Alpha-tubulin 3, Tubulin B-alpha-1, Tubulin alpha-3 chain, TUBA1A, TUBA3

Format

Liquid. Purified antibody supplied in 1x PBS buffer with 0.09% (w/v) sodium azide and 2% sucrose.

Reconstitution & Storage

Add 50 ul of distilled water. Final anti-TUBA1A antibody concentration is 1 mg/ml in PBS buffer with 2% sucrose. For longer periods of storage, store at 20°C. Avoid repeat freeze-thaw cycles.

Precautions

TUBA1A antibody - C-terminal region is for research use only and not for use in diagnostic or therapeutic procedures.

TUBA1A antibody - C-terminal region - Protein Information**Name** TUBA1A**Synonyms** TUBA3**Function**

Tubulin is the major constituent of microtubules, a cylinder consisting of laterally associated linear protofilaments composed of alpha- and beta-tubulin heterodimers. Microtubules grow by the addition of GTP-tubulin dimers to the microtubule end, where a stabilizing cap forms. Below the cap, tubulin dimers are in GDP-bound state, owing to GTPase activity of alpha-tubulin.

Cellular Location

Cytoplasm, cytoskeleton. Cytoplasm, cytoskeleton, flagellum axoneme
{ECO:0000250|UniProtKB:P68369}

Tissue Location

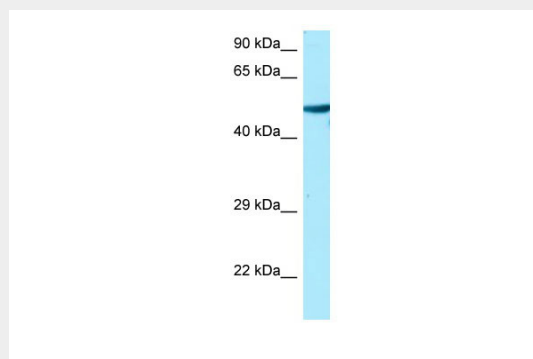
Expressed at a high level in fetal brain.

TUBA1A antibody - C-terminal region - Protocols

Provided below are standard protocols that you may find useful for product applications.

- [Western Blot](#)
- [Blocking Peptides](#)
- [Dot Blot](#)
- [Immunohistochemistry](#)
- [Immunofluorescence](#)
- [Immunoprecipitation](#)
- [Flow Cytometry](#)
- [Cell Culture](#)

TUBA1A antibody - C-terminal region - Images



WB Suggested Anti-TUBA1A Antibody Titration: 1.0 µg/ml
Positive Control: Hela Whole Cell

TUBA1A antibody - C-terminal region - References

- Hall J.L., et al. Nucleic Acids Res. 13:207-223(1985).
Crabtree D.V., et al. Bioorg. Med. Chem. 9:1967-1976(2001).
Ota T., et al. Nat. Genet. 36:40-45(2004).
Scherer S.E., et al. Nature 440:346-351(2006).
Mural R.J., et al. Submitted (JUL-2005) to the EMBL/GenBank/DDBJ databases.