

RAB3C antibody - C-terminal region
Rabbit Polyclonal Antibody
Catalog # AI15093

Specification

RAB3C antibody - C-terminal region - Product Information

Application	WB
Primary Accession	O96E17
Other Accession	NM_138453 , NP_612462
Reactivity	Human, Mouse, Rat, Rabbit, Pig, Sheep, Horse, Bovine, Guinea Pig, Dog
Predicted	Human, Mouse, Rat, Rabbit, Pig, Sheep, Horse, Bovine, Guinea Pig, Dog
Host	Rabbit
Clonality	Polyclonal
Calculated MW	26kDa KDa

RAB3C antibody - C-terminal region - Additional Information

Gene ID 115827

Other Names

Ras-related protein Rab-3C, RAB3C

Format

Liquid. Purified antibody supplied in 1x PBS buffer with 0.09% (w/v) sodium azide and 2% sucrose.

Reconstitution & Storage

Add 50 ul of distilled water. Final anti-RAB3C antibody concentration is 1 mg/ml in PBS buffer with 2% sucrose. For longer periods of storage, store at 20°C. Avoid repeat freeze-thaw cycles.

Precautions

RAB3C antibody - C-terminal region is for research use only and not for use in diagnostic or therapeutic procedures.

RAB3C antibody - C-terminal region - Protein Information

Name RAB3C

Function

Protein transport. Probably involved in vesicular traffic (By similarity).

Cellular Location

Cell membrane; Lipid-anchor; Cytoplasmic side

Tissue Location

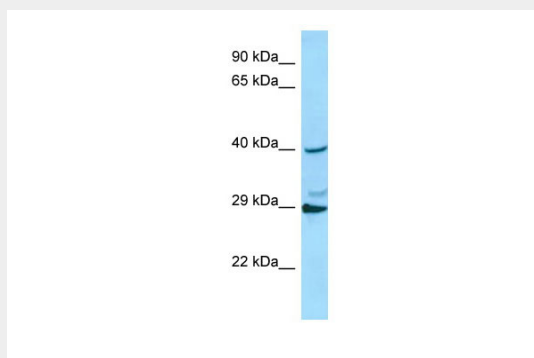
Expressed in brain, placenta and lung.

RAB3C antibody - C-terminal region - Protocols

Provided below are standard protocols that you may find useful for product applications.

- [Western Blot](#)
- [Blocking Peptides](#)
- [Dot Blot](#)
- [Immunohistochemistry](#)
- [Immunofluorescence](#)
- [Immunoprecipitation](#)
- [Flow Cytometry](#)
- [Cell Culture](#)

RAB3C antibody - C-terminal region - Images



Host: Rabbit
Target Name: RAB3C
Antibody Dilution: 1.0 μ g/ml
Sample Tissue: THP-1 cell lysate

RAB3C antibody - C-terminal region - References

Cheng H., et al. *Biochem. Genet.* 40:263-272(2002).