

ITGA2 Antibody - C-terminal region
Rabbit Polyclonal Antibody
Catalog # AI15087**Specification**

ITGA2 Antibody - C-terminal region - Product Information

Application	IF, WB
Primary Accession	P17301
Other Accession	NM_002203 , NP_002194
Reactivity	Human, Mouse, Rat, Rabbit, Pig, Horse, Bovine, Guinea Pig, Dog
Predicted	Human, Mouse, Rat, Rabbit, Pig, Horse, Bovine, Guinea Pig, Dog
Host	Rabbit
Clonality	Polyclonal
Calculated MW	126kDa KDa

ITGA2 Antibody - C-terminal region - Additional Information**Gene ID** 3673**Alias Symbol** BR, CD49B, GPIa, VLA-2, VLAA2, BDPLT9**Other Names**

Integrin alpha-2, CD49 antigen-like family member B, Collagen receptor, Platelet membrane glycoprotein Ia, GPIa, VLA-2 subunit alpha, CD49b, ITGA2, CD49B

Format

Liquid. Purified antibody supplied in 1x PBS buffer with 0.09% (w/v) sodium azide and 2% sucrose.

Reconstitution & Storage

Add 50 ul of distilled water. Final anti-ITGA2 antibody concentration is 1 mg/ml in PBS buffer with 2% sucrose. For longer periods of storage, store at 20°C. Avoid repeat freeze-thaw cycles.

Precautions

ITGA2 Antibody - C-terminal region is for research use only and not for use in diagnostic or therapeutic procedures.

ITGA2 Antibody - C-terminal region - Protein Information**Name** ITGA2**Synonyms** CD49B**Function**

Integrin alpha-2/beta-1 is a receptor for laminin, collagen, collagen C-propeptides, fibronectin and E-cadherin. It recognizes the proline-hydroxylated sequence G-F-P-G-E-R in collagen. It is responsible for adhesion of platelets and other cells to collagens, modulation of collagen and collagenase gene expression, force generation and organization of newly synthesized extracellular

matrix. (Microbial infection) Integrin ITGA2:ITGB1 acts as a receptor for Human echoviruses 1 and 8.

Cellular Location

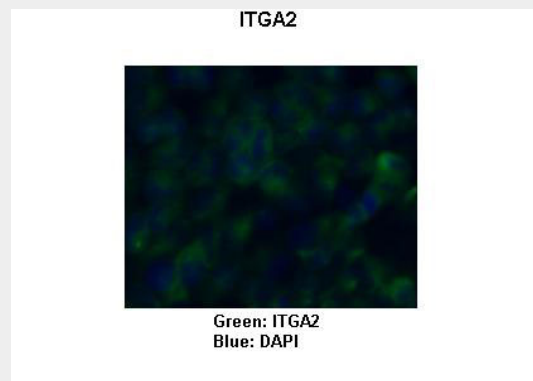
Membrane; Single-pass type I membrane protein.

ITGA2 Antibody - C-terminal region - Protocols

Provided below are standard protocols that you may find useful for product applications.

- [Western Blot](#)
- [Blocking Peptides](#)
- [Dot Blot](#)
- [Immunohistochemistry](#)
- [Immunofluorescence](#)
- [Immunoprecipitation](#)
- [Flow Cytometry](#)
- [Cell Culture](#)

ITGA2 Antibody - C-terminal region - Images



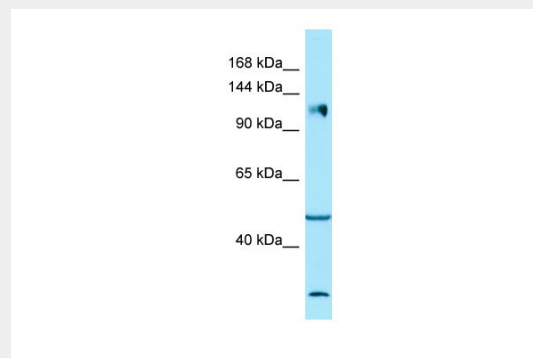
Sample Type : HeLa cells

Primary Antibody Dilution : 1:150

Secondary Antibody : Goat anti-rabbit-Alexa Fluor 488 Secondary Antibody Dilution : 1:800

Color/Signal Descriptions : Green: ITGA2Blue: DAPI

Gene Name : ITGA2 Submitted by : COCOLA Cinzia, Stem Cell Biology and Cancer Research Unit



WB Suggested Anti-ITGA2 Antibody Titration: 1.0 µg/ml

Positive Control: HT1080 Whole CellITGA2 is supported by BioGPS gene expression data to be expressed in HT1080

ITGA2 Antibody - C-terminal region - References

- Takada Y.,et al.J. Cell Biol. 109:397-407(1989).
Schmutz J.,et al.Nature 431:268-274(2004).
Zutter M.M.,et al.J. Biol. Chem. 269:463-469(1994).
Bergelson J.M.,et al.J. Virol. 67:6847-6852(1993).
Graham K.L.,et al.J. Virol. 77:9969-9978(2003).