

STC2 antibody - C-terminal region
Rabbit Polyclonal Antibody
Catalog # AI15070

Specification

STC2 antibody - C-terminal region - Product Information

Application	WB
Primary Accession	O76061
Other Accession	NM_003714 , NP_003705
Reactivity	Human, Mouse, Rat, Rabbit, Pig, Bovine, Guinea Pig, Dog
Predicted	Human, Mouse, Rat, Rabbit, Pig, Bovine, Dog
Host	Rabbit
Clonality	Polyclonal
Calculated MW	31kDa KDa

STC2 antibody - C-terminal region - Additional Information

Gene ID 8614

Alias Symbol STC-2, STCRP

Other Names

Stanniocalcin-2, STC-2, Stanniocalcin-related protein, STC-related protein, STCRP, STC2

Format

Liquid. Purified antibody supplied in 1x PBS buffer with 0.09% (w/v) sodium azide and 2% sucrose.

Reconstitution & Storage

Add 50 ul of distilled water. Final anti-STC2 antibody concentration is 1 mg/ml in PBS buffer with 2% sucrose. For longer periods of storage, store at 20°C. Avoid repeat freeze-thaw cycles.

Precautions

STC2 antibody - C-terminal region is for research use only and not for use in diagnostic or therapeutic procedures.

STC2 antibody - C-terminal region - Protein Information

Name STC2

Function

Has an anti-hypocalcemic action on calcium and phosphate homeostasis.

Cellular Location

Secreted.

Tissue Location

Expressed in a variety of tissues including muscle, heart, pancreas, kidney, spleen, prostate, small

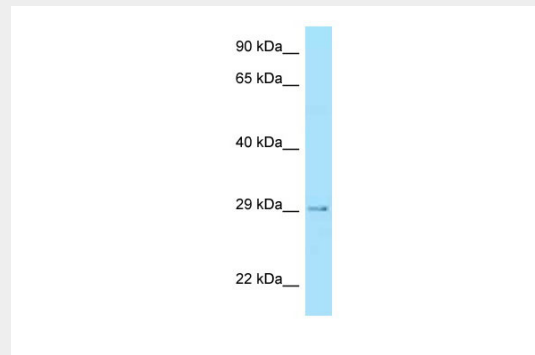
intestine, colon and peripheral blood leukocytes

STC2 antibody - C-terminal region - Protocols

Provided below are standard protocols that you may find useful for product applications.

- [Western Blot](#)
- [Blocking Peptides](#)
- [Dot Blot](#)
- [Immunohistochemistry](#)
- [Immunofluorescence](#)
- [Immunoprecipitation](#)
- [Flow Cytometry](#)
- [Cell Culture](#)

STC2 antibody - C-terminal region - Images



WB Suggested Anti-STC2 Antibody Titration: 1.0 µg/ml
Positive Control: Fetal Heart

STC2 antibody - C-terminal region - References

- Chang A.C.-M., et al. *Mol. Cell. Endocrinol.* 141:95-99(1998).
Ishiabshi K., et al. *Biochem. Biophys. Res. Commun.* 250:252-258(1998).
DiMattia G.E., et al. *Mol. Cell. Endocrinol.* 146:137-140(1998).
Moore E.E., et al. *Horm. Metab. Res.* 31:406-414(1999).
Kalnine N., et al. Submitted (OCT-2004) to the EMBL/GenBank/DDBJ databases.