

**RAB1B antibody - C-terminal region**  
**Rabbit Polyclonal Antibody**  
**Catalog # AI15060****Specification**

---

**RAB1B antibody - C-terminal region - Product Information**

Application	WB
Primary Accession	<a href="#">O9H0U4</a>
Other Accession	<a href="#">NM_030981</a> , <a href="#">NP_112243</a>
Reactivity	Human, Mouse, Rat, Horse, Bovine, Guinea Pig, Dog
Predicted Host	Human, Mouse, Rat, Pig, Bovine
Clonality	Rabbit
Calculated MW	Polyclonal 22kDa KDa

**RAB1B antibody - C-terminal region - Additional Information****Gene ID** 81876**Other Names**

Ras-related protein Rab-1B, RAB1B

**Format**

Liquid. Purified antibody supplied in 1x PBS buffer with 0.09% (w/v) sodium azide and 2% sucrose.

**Reconstitution & Storage**

Add 50 ul of distilled water. Final anti-RAB1B antibody concentration is 1 mg/ml in PBS buffer with 2% sucrose. For longer periods of storage, store at 20°C. Avoid repeat freeze-thaw cycles.

**Precautions**

RAB1B antibody - C-terminal region is for research use only and not for use in diagnostic or therapeutic procedures.

**RAB1B antibody - C-terminal region - Protein Information****Name** RAB1B**Function**

The small GTPases Rab are key regulators of intracellular membrane trafficking, from the formation of transport vesicles to their fusion with membranes (PubMed: [20545908](http://www.uniprot.org/citations/20545908), PubMed: [9437002](http://www.uniprot.org/citations/9437002)). Rabs cycle between an inactive GDP-bound form and an active GTP-bound form that is able to recruit to membranes different set of downstream effectors directly responsible for vesicle formation, movement, tethering and fusion (PubMed: [9437002](http://www.uniprot.org/citations/9437002)). Plays a role in the initial events of the autophagic vacuole development which take place at specialized regions of the endoplasmic reticulum (PubMed: [9437002](http://www.uniprot.org/citations/9437002)).

[20545908](http://www.uniprot.org/citations/20545908)). Regulates vesicular transport between the endoplasmic reticulum and successive Golgi compartments (By similarity). Required to modulate the compacted morphology of the Golgi (PubMed:[26209634](http://www.uniprot.org/citations/26209634)). Promotes the recruitment of lipid phosphatase MTMR6 to the endoplasmic reticulum-Golgi intermediate compartment (By similarity).

#### Cellular Location

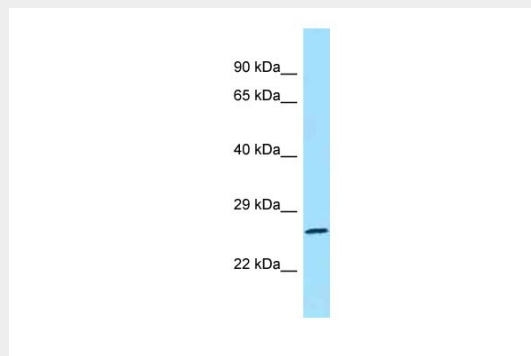
Cytoplasm. Membrane; Lipid-anchor; Cytoplasmic side. Preautophagosomal structure membrane; Lipid-anchor; Cytoplasmic side. Cytoplasm, perinuclear region {ECO:0000250|UniProtKB:P10536}. Note=Targeted by REP1 to membranes of specific subcellular compartments including endoplasmic reticulum, Golgi apparatus, and intermediate vesicles between these two compartments (PubMed:11389151). In the GDP-form, colocalizes with GDI in the cytoplasm (PubMed:11389151). Co-localizes with MTMR6 to the endoplasmic reticulum-Golgi intermediate compartment and to the peri- Golgi region (By similarity). {ECO:0000250|UniProtKB:P10536, ECO:0000269|PubMed:11389151}

#### RAB1B antibody - C-terminal region - Protocols

Provided below are standard protocols that you may find useful for product applications.

- [Western Blot](#)
- [Blocking Peptides](#)
- [Dot Blot](#)
- [Immunohistochemistry](#)
- [Immunofluorescence](#)
- [Immunoprecipitation](#)
- [Flow Cytometry](#)
- [Cell Culture](#)

#### RAB1B antibody - C-terminal region - Images



RAB1B antibody - C-terminal region (AI15060) validated by WB using Fetal Kidney Lysate at 1 µg/ml.

#### RAB1B antibody - C-terminal region - References

- Zhao Y., et al. Submitted (SEP-1998) to the EMBL/GenBank/DDBJ databases.  
Wiemann S., et al. Genome Res. 11:422-435(2001).  
Ota T., et al. Nat. Genet. 36:40-45(2004).  
Bienvenut W.V., et al. Submitted (JUN-2005) to UniProtKB.  
Wilson A.L., et al. Biochem. J. 318:1007-1014(1996).