

**PROKR2 antibody - C-terminal region**  
**Rabbit Polyclonal Antibody**  
**Catalog # AI15055****Specification**

---

**PROKR2 antibody - C-terminal region - Product Information**

Application	<b>WB</b>
Primary Accession	<a href="#">Q8NFJ6</a>
Other Accession	<a href="#">NM_144773</a> , <a href="#">NP_658986</a>
Reactivity	<b>Human, Mouse, Rat, Rabbit, Horse, Bovine, Guinea Pig, Dog</b>
Predicted Host	<b>Mouse, Rat, Rabbit, Horse, Guinea Pig, Dog</b>
Clonality	<b>Rabbit</b>
Calculated MW	<b>Polyclonal</b> <b>44kDa KDa</b>

**PROKR2 antibody - C-terminal region - Additional Information****Gene ID** 128674**Alias Symbol** **GPR73L1, GPR73b, GPRg2, KAL3, PKR2, dj680N4.3****Other Names**

Prokineticin receptor 2, PK-R2, G-protein coupled receptor 73-like 1, GPR73b, GPRg2, PROKR2, GPR73L1, PKR2

**Format**

Liquid. Purified antibody supplied in 1x PBS buffer with 0.09% (w/v) sodium azide and 2% sucrose.

**Reconstitution & Storage**

Add 50 ul of distilled water. Final anti-PROKR2 antibody concentration is 1 mg/ml in PBS buffer with 2% sucrose. For longer periods of storage, store at 20°C. Avoid repeat freeze-thaw cycles.

**Precautions**

PROKR2 antibody - C-terminal region is for research use only and not for use in diagnostic or therapeutic procedures.

**PROKR2 antibody - C-terminal region - Protein Information****Name** PROKR2**Synonyms** GPR73L1, PKR2**Function**

Receptor for prokineticin 2. Exclusively coupled to the G(q) subclass of heteromeric G proteins. Activation leads to mobilization of calcium, stimulation of phosphoinositide turnover and activation of p44/p42 mitogen-activated protein kinase.

**Cellular Location**

Cell membrane; Multi-pass membrane protein

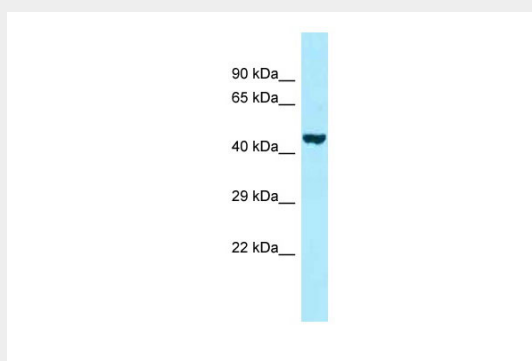
**Tissue Location**

Expressed in the ileocecum, thyroid gland, pituitary gland, salivary gland, adrenal gland, testis, ovary and brain

**PROKR2 antibody - C-terminal region - Protocols**

Provided below are standard protocols that you may find useful for product applications.

- [Western Blot](#)
- [Blocking Peptides](#)
- [Dot Blot](#)
- [Immunohistochemistry](#)
- [Immunofluorescence](#)
- [Immunoprecipitation](#)
- [Flow Cytometry](#)
- [Cell Culture](#)

**PROKR2 antibody - C-terminal region - Images**

WB Suggested Anti-PROKR2 Antibody Titration: 1.0 µg/ml  
Positive Control: Fetal Heart

**PROKR2 antibody - C-terminal region - References**

- Lin D.C.-H., et al. *J. Biol. Chem.* 277:19276-19280(2002).  
Soga T., et al. *Biochim. Biophys. Acta* 1579:173-179(2002).  
Martin A.L., et al. Submitted (APR-2007) to the EMBL/GenBank/DDBJ databases.  
Deloukas P., et al. *Nature* 414:865-871(2001).  
Marsango S., et al. *Cell. Mol. Life Sci.* 68:2919-2929(2011).