

EDNRA antibody - C-terminal region
Rabbit Polyclonal Antibody
Catalog # AI15049**Specification**

EDNRA antibody - C-terminal region - Product Information

Application	WB
Primary Accession	P25101
Other Accession	NM_001166055 , NP_001159527
Reactivity	Human, Mouse, Rabbit, Sheep, Horse, Bovine, Guinea Pig, Dog
Predicted	Human, Mouse, Rabbit, Pig, Chicken, Sheep, Horse, Bovine, Guinea Pig, Dog
Host	Rabbit
Clonality	Polyclonal
Calculated MW	34kDa kDa

EDNRA antibody - C-terminal region - Additional Information**Gene ID** 1909**Alias Symbol** ETA, ETAR, ETRA, ET-A, ETA-R, hET-AR**Other Names**

Endothelin-1 receptor, Endothelin A receptor, ET-A, ETA-R, hET-AR, EDNRA, ETA, ETRA

Format

Liquid. Purified antibody supplied in 1x PBS buffer with 0.09% (w/v) sodium azide and 2% sucrose.

Reconstitution & Storage

Add 50 ul of distilled water. Final anti-EDNRA antibody concentration is 1 mg/ml in PBS buffer with 2% sucrose. For longer periods of storage, store at 20°C. Avoid repeat freeze-thaw cycles.

Precautions

EDNRA antibody - C-terminal region is for research use only and not for use in diagnostic or therapeutic procedures.

EDNRA antibody - C-terminal region - Protein Information**Name** EDNRA ([HGNC:3179](#))**Synonyms** ETA, ETRA**Function**

Receptor for endothelin-1. Mediates its action by association with G proteins that activate a phosphatidylinositol-calcium second messenger system. The rank order of binding affinities for ET-A is: ET1 > ET2 >> ET3.

Cellular Location

Cell membrane; Multi-pass membrane protein.

Tissue Location

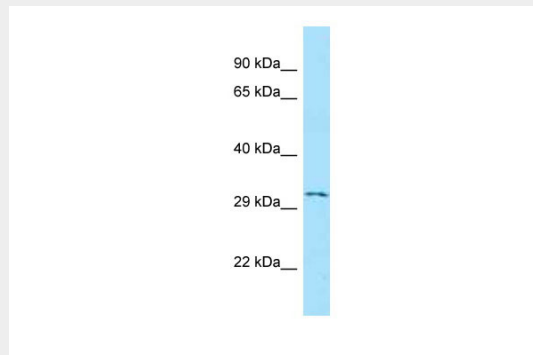
Isoform 1, isoform 3 and isoform 4 are expressed in a variety of tissues, with highest levels in the aorta and cerebellum, followed by lung, atrium and cerebral cortex, lower levels in the placenta, kidney, adrenal gland, duodenum, colon, ventricle and liver but no expression in umbilical vein endothelial cells. Within the placenta, isoform 1, isoform 2, isoform 3 and isoform 4 are expressed in the villi and stem villi vessels.

EDNRA antibody - C-terminal region - Protocols

Provided below are standard protocols that you may find useful for product applications.

- [Western Blot](#)
- [Blocking Peptides](#)
- [Dot Blot](#)
- [Immunohistochemistry](#)
- [Immunofluorescence](#)
- [Immunoprecipitation](#)
- [Flow Cytometry](#)
- [Cell Culture](#)

EDNRA antibody - C-terminal region - Images



WB Suggested Anti-EDNRA Antibody Titration: 1.0 µg/ml
Positive Control: Jurkat Whole Cell

EDNRA antibody - C-terminal region - References

- Adachi M., et al. *Biochem. Biophys. Res. Commun.* 180:1265-1272(1991).
Cyr C., et al. *Biochem. Biophys. Res. Commun.* 181:184-190(1991).
Hosoda K., et al. *FEBS Lett.* 287:23-26(1991).
Arai H., et al. *Jpn. Circ. J.* 56:1303-1307(1992).
Elshourbagy N.A., et al. *J. Biol. Chem.* 268:3873-3879(1993).