

PRKCSH antibody - N-terminal region
Rabbit Polyclonal Antibody
Catalog # AI15047**Specification**

PRKCSH antibody - N-terminal region - Product Information

Application	WB
Primary Accession	P14314
Other Accession	NM_002743 , NP_002734
Reactivity	Human, Mouse, Rat, Pig, Horse, Bovine, Guinea Pig, Dog
Predicted	Human, Mouse, Rat, Pig, Horse, Bovine, Guinea Pig, Dog
Host	Rabbit
Clonality	Polyclonal
Calculated MW	59kDa kDa

PRKCSH antibody - N-terminal region - Additional Information**Gene ID** 5589**Alias Symbol** AGE-R2, G19P1, PCLD, PLD1**Other Names**

Glucosidase 2 subunit beta, 80K-H protein, Glucosidase II subunit beta, Protein kinase C substrate 60.1 kDa protein heavy chain, PKCSH, PRKCSH, G19P1

Format

Liquid. Purified antibody supplied in 1x PBS buffer with 0.09% (w/v) sodium azide and 2% sucrose.

Reconstitution & Storage

Add 50 ul of distilled water. Final anti-PRKCSH antibody concentration is 1 mg/ml in PBS buffer with 2% sucrose. For longer periods of storage, store at 20°C. Avoid repeat freeze-thaw cycles.

Precautions

PRKCSH antibody - N-terminal region is for research use only and not for use in diagnostic or therapeutic procedures.

PRKCSH antibody - N-terminal region - Protein Information**Name** PRKCSH {ECO:0000303|PubMed:28375157, ECO:0000312|HGNC:HGNC:9411}**Function**

Regulatory subunit of glucosidase II that cleaves sequentially the 2 innermost alpha-1,3-linked glucose residues from the Glc(2)Man(9)GlcNAc(2) oligosaccharide precursor of immature glycoproteins (PubMed:10929008). Required for efficient PKD1/Polycystin-1 biogenesis and trafficking to the plasma membrane of the primary cilia (By similarity).

Cellular Location

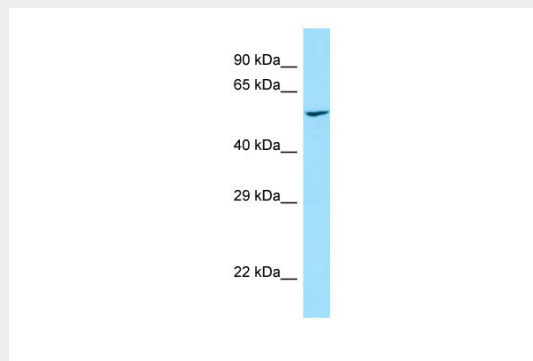
Endoplasmic reticulum {ECO:0000255|PROSITE- ProRule:PRU10138, ECO:0000305|PubMed:10929008}

PRKCSH antibody - N-terminal region - Protocols

Provided below are standard protocols that you may find useful for product applications.

- [Western Blot](#)
- [Blocking Peptides](#)
- [Dot Blot](#)
- [Immunohistochemistry](#)
- [Immunofluorescence](#)
- [Immunoprecipitation](#)
- [Flow Cytometry](#)
- [Cell Culture](#)

PRKCSH antibody - N-terminal region - Images



Host: Rabbit
Target Name: PRKCSH
Antibody Dilution: 1.0µg/ml
Sample Tissue: Human Kidney

PRKCSH antibody - N-terminal region - References

Sakai K., et al. Genomics 5:309-315(1989).
Ophoff R.A., et al. Eur. J. Hum. Genet. 4:321-328(1996).
Pelletier M.F., et al. Glycobiology 10:815-827(2000).
Kalnine N., et al. Submitted (AUG-2003) to the EMBL/GenBank/DDBJ databases.
Ota T., et al. Nat. Genet. 36:40-45(2004).