

FCGR1A Antibody - C-terminal region
Rabbit Polyclonal Antibody
Catalog # AI15043**Specification**

FCGR1A Antibody - C-terminal region - Product Information

Application	WB
Primary Accession	P12314
Other Accession	NM_000566 , NP_000557
Reactivity	Human, Yeast
Predicted	Human, Yeast
Host	Rabbit
Clonality	Polyclonal
Calculated MW	43kDa KDa

FCGR1A Antibody - C-terminal region - Additional Information**Gene ID** 2209**Alias Symbol** CD64, CD64A, FCRI, FLJ18345, IGFR1**Other Names**

High affinity immunoglobulin gamma Fc receptor I, IgG Fc receptor I, Fc-gamma RI, FcRI, Fc-gamma RIA, FcgammaRIa, CD64, FCGR1A, FCG1, FCGR1, IGFR1

Format

Liquid. Purified antibody supplied in 1x PBS buffer with 0.09% (w/v) sodium azide and 2% sucrose.

Reconstitution & Storage

Add 50 ul of distilled water. Final anti-FCGR1A antibody concentration is 1 mg/ml in PBS buffer with 2% sucrose. For longer periods of storage, store at 20°C. Avoid repeat freeze-thaw cycles.

Precautions

FCGR1A Antibody - C-terminal region is for research use only and not for use in diagnostic or therapeutic procedures.

FCGR1A Antibody - C-terminal region - Protein Information**Name** FCGR1A**Synonyms** FCG1, FCGR1, IGFR1**Function**

High affinity receptor for the Fc region of immunoglobulins gamma. Functions in both innate and adaptive immune responses. Mediates IgG effector functions on monocytes triggering antibody-dependent cellular cytotoxicity (ADCC) of virus-infected cells.

Cellular Location

Cell membrane; Single-pass type I membrane protein Note=Stabilized at the cell membrane

through interaction with FCER1G

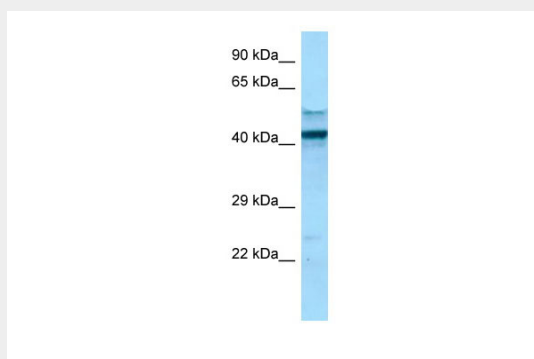
Tissue Location

Monocyte/macrophage specific.

FCGR1A Antibody - C-terminal region - Protocols

Provided below are standard protocols that you may find useful for product applications.

- [Western Blot](#)
- [Blocking Peptides](#)
- [Dot Blot](#)
- [Immunohistochemistry](#)
- [Immunofluorescence](#)
- [Immunoprecipitation](#)
- [Flow Cytometry](#)
- [Cell Culture](#)

FCGR1A Antibody - C-terminal region - Images

WB Suggested Anti-FCGR1A Antibody Titration: 1.0 µg/ml

Positive Control: NCI-H226 Whole Cell. FCGR1A is strongly supported by BioGPS gene expression data to be expressed in NCI-H226

FCGR1A Antibody - C-terminal region - References

- Allen J.M., et al. Nucleic Acids Res. 16:11824-11824(1988).
Allen J.M., et al. Science 243:378-381(1989).
Porges A.J., et al. J. Clin. Invest. 90:2102-2109(1992).
Benech P.D., et al. J. Exp. Med. 176:1115-1123(1992).
Gregory S.G., et al. Nature 441:315-321(2006).