

HSPA1B antibody - C-terminal region
Rabbit Polyclonal Antibody
Catalog # AI15029**Specification**

HSPA1B antibody - C-terminal region - Product Information

Application	WB
Primary Accession	P08107
Other Accession	NM_005346 , NP_005337
Reactivity	Human, Mouse, Rat, Rabbit, Pig, Goat, Sheep, Horse, Bovine, Guinea Pig, Dog
Predicted	Human, Mouse, Rat, Rabbit, Pig, Goat, Sheep, Horse, Bovine, Guinea Pig, Dog
Host	Rabbit
Clonality	Polyclonal
Calculated MW	70kDa KDa

HSPA1B antibody - C-terminal region - Additional Information

Alias Symbol **FLJ54328, HSP70-1B, HSP70-2, HSPA1A**

Other Names

Heat shock 70 kDa protein 1A/1B, Heat shock 70 kDa protein 1/2, HSP70-1/HSP70-2, HSP70.1/HSP70.2, HSPA1A, HSPA1, HSX70

Format

Liquid. Purified antibody supplied in 1x PBS buffer with 0.09% (w/v) sodium azide and 2% sucrose.

Reconstitution & Storage

Add 50 ul of distilled water. Final anti-HSPA1B antibody concentration is 1 mg/ml in PBS buffer with 2% sucrose. For longer periods of storage, store at 20°C. Avoid repeat freeze-thaw cycles.

Precautions

HSPA1B antibody - C-terminal region is for research use only and not for use in diagnostic or therapeutic procedures.

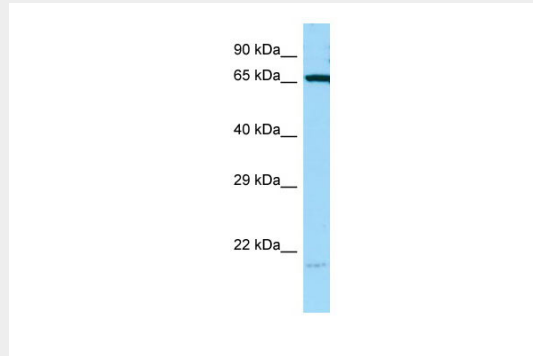
HSPA1B antibody - C-terminal region - Protein Information**HSPA1B antibody - C-terminal region - Protocols**

Provided below are standard protocols that you may find useful for product applications.

- [Western Blot](#)
- [Blocking Peptides](#)
- [Dot Blot](#)
- [Immunohistochemistry](#)
- [Immunofluorescence](#)

- [Immunoprecipitation](#)
- [Flow Cytometry](#)
- [Cell Culture](#)

HSPA1B antibody - C-terminal region - Images



WB Suggested Anti-HSPA1B Antibody Titration: 1.0 µg/ml

Positive Control: MDA-MB-435S Whole Cell
HSPA1B is strongly supported by BioGPS gene expression data to be expressed in Human MDA-MB435 cells

HSPA1B antibody - C-terminal region - References

- Milner C.M., et al. Immunogenetics 32:242-251(1990).
Hunt C., et al. Proc. Natl. Acad. Sci. U.S.A. 82:6455-6459(1985).
Xie T., et al. Genome Res. 13:2621-2636(2003).
Shiina S., et al. Submitted (SEP-1999) to the EMBL/GenBank/DDBJ databases.
Ota T., et al. Nat. Genet. 36:40-45(2004).