

PALB2 antibody - N-terminal region
Rabbit Polyclonal Antibody
Catalog # AI15014**Specification**

PALB2 antibody - N-terminal region - Product Information

Application	WB
Primary Accession	Q86YC2
Other Accession	NM_024675 , BAB15140
Reactivity	Human
Predicted	Human
Host	Rabbit
Clonality	Polyclonal
Calculated MW	64kDa KDa

PALB2 antibody - N-terminal region - Additional Information**Gene ID** 79728**Alias Symbol** **FANCN, PNCA3****Other Names**

Partner and localizer of BRCA2, PALB2, FANCN

Format

Liquid. Purified antibody supplied in 1x PBS buffer with 0.09% (w/v) sodium azide and 2% sucrose.

Reconstitution & Storage

Add 50 ul of distilled water. Final anti-PALB2 antibody concentration is 1 mg/ml in PBS buffer with 2% sucrose. For longer periods of storage, store at 20°C. Avoid repeat freeze-thaw cycles.

Precautions

PALB2 antibody - N-terminal region is for research use only and not for use in diagnostic or therapeutic procedures.

PALB2 antibody - N-terminal region - Protein Information**Name** PALB2**Synonyms** FANCN**Function**Plays a critical role in homologous recombination repair (HRR) through its ability to recruit BRCA2 and RAD51 to DNA breaks (PubMed: [16793542](http://www.uniprot.org/citations/16793542) target="_blank">16793542, PubMed: [19369211](http://www.uniprot.org/citations/19369211) target="_blank">19369211, PubMed: [19423707](http://www.uniprot.org/citations/19423707) target="_blank">19423707, PubMed: [22941656](http://www.uniprot.org/citations/22941656) target="_blank">22941656, PubMed: [24141787](http://www.uniprot.org/citations/24141787) target="_blank">24141787, PubMed: [28319063](http://www.uniprot.org/citations/28319063) target="_blank">28319063)

target="_blank">28319063). Strongly stimulates the DNA strand-invasion activity of RAD51, stabilizes the nucleoprotein filament against a disruptive BRC3-BRC4 polypeptide and helps RAD51 to overcome the suppressive effect of replication protein A (RPA) (PubMed:20871615). Functionally cooperates with RAD51AP1 in promoting of D-loop formation by RAD51 (PubMed:20871616). Serves as the molecular scaffold in the formation of the BRCA1-PALB2-BRCA2 complex which is essential for homologous recombination (PubMed:19369211). Via its WD repeats is proposed to scaffold a HR complex containing RAD51C and BRCA2 which is thought to play a role in HR-mediated DNA repair (PubMed:24141787). Essential partner of BRCA2 that promotes the localization and stability of BRCA2 (PubMed:16793542). Also enables its recombinational repair and checkpoint functions of BRCA2 (PubMed:16793542). May act by promoting stable association of BRCA2 with nuclear structures, allowing BRCA2 to escape the effects of proteasome-mediated degradation (PubMed:16793542). Binds DNA with high affinity for D loop, which comprises single-stranded, double-stranded and branched DNA structures (PubMed:20871616). May play a role in the extension step after strand invasion at replication-dependent DNA double-strand breaks; together with BRCA2 is involved in both POLH localization at collapsed replication forks and DNA polymerization activity (PubMed:24485656).

Cellular Location

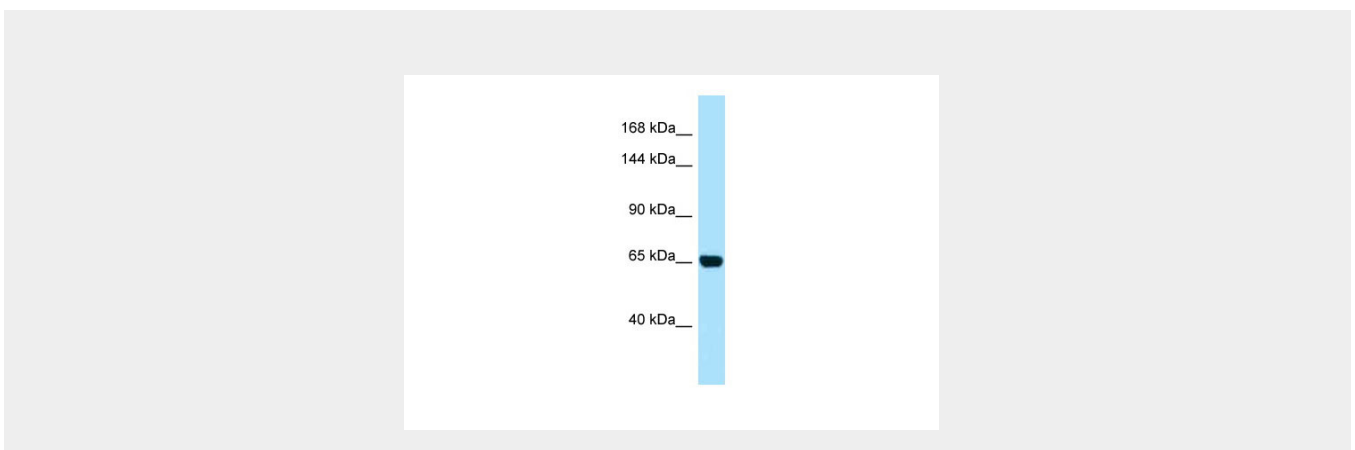
Nucleus Note=Colocalizes with BRCA2 and BRCA1 in nuclear foci

PALB2 antibody - N-terminal region - Protocols

Provided below are standard protocols that you may find useful for product applications.

- [Western Blot](#)
- [Blocking Peptides](#)
- [Dot Blot](#)
- [Immunohistochemistry](#)
- [Immunofluorescence](#)
- [Immunoprecipitation](#)
- [Flow Cytometry](#)
- [Cell Culture](#)

PALB2 antibody - N-terminal region - Images



WB Suggested Anti-PALB2 Antibody Titration: 1.0 µg/ml

Positive Control: Hela Whole CellPALB2 is supported by BioGPS gene expression data to be expressed in HeLa

PALB2 antibody - N-terminal region - References

- Bechtel S.,et al.BMC Genomics 8:399-399(2007).
Martin J.,et al.Nature 432:988-994(2004).
Mural R.J.,et al.Submitted (SEP-2005) to the EMBL/GenBank/DDBJ databases.
Ota T.,et al.Nat. Genet. 36:40-45(2004).
Xia B.,et al.Mol. Cell 22:719-729(2006).