

IL3RA antibody - C-terminal region
Rabbit Polyclonal Antibody
Catalog # AI15012**Specification**

IL3RA antibody - C-terminal region - Product Information

Application	WB
Primary Accession	P26951
Other Accession	NM_002183 , NP_002174
Reactivity	Human
Predicted	Human
Host	Rabbit
Clonality	Polyclonal
Calculated MW	41kDa KDa

IL3RA antibody - C-terminal region - Additional Information**Gene ID** 3563**Alias Symbol** [CD123](#), [IL3R](#), [IL3RAY](#), [IL3RX](#), [IL3RY](#), [MGC34174](#), [hIL-3Ra](#)**Other Names**

Interleukin-3 receptor subunit alpha, IL-3 receptor subunit alpha, IL-3R subunit alpha, IL-3R-alpha, IL-3RA, CD123, IL3RA, IL3R

Format

Liquid. Purified antibody supplied in 1x PBS buffer with 0.09% (w/v) sodium azide and 2% sucrose.

Reconstitution & Storage

Add 50 ul of distilled water. Final anti-IL3RA antibody concentration is 1 mg/ml in PBS buffer with 2% sucrose. For longer periods of storage, store at 20°C. Avoid repeat freeze-thaw cycles.

Precautions

IL3RA antibody - C-terminal region is for research use only and not for use in diagnostic or therapeutic procedures.

IL3RA antibody - C-terminal region - Protein Information**Name** IL3RA ([HGNC:6012](#))**Synonyms** IL3R**Function**

Cell surface receptor for IL3 expressed on hematopoietic progenitor cells, monocytes and B-lymphocytes that controls the production and differentiation of hematopoietic progenitor cells into lineage-restricted cells (PubMed:10527461). Ligand stimulation rapidly induces heterodimerization with IL3RB, phosphorylation and enzyme activity of effector proteins such as JAK2 and PI3K that play a

role in signaling cell proliferation and differentiation. Activation of JAK2 leads to STAT5-mediated transcriptional program (By similarity).

Cellular Location

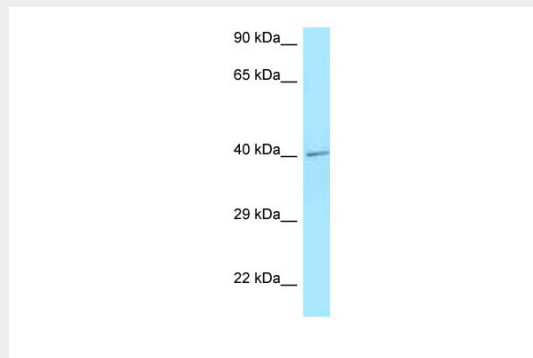
Membrane; Single-pass type I membrane protein.

IL3RA antibody - C-terminal region - Protocols

Provided below are standard protocols that you may find useful for product applications.

- [Western Blot](#)
- [Blocking Peptides](#)
- [Dot Blot](#)
- [Immunohistochemistry](#)
- [Immunofluorescence](#)
- [Immunoprecipitation](#)
- [Flow Cytometry](#)
- [Cell Culture](#)

IL3RA antibody - C-terminal region - Images



WB Suggested Anti-IL3RA Antibody Titration: 1.0 µg/ml

Positive Control: MCF7 Whole Cell

IL3RA antibody - C-terminal region - References

- Kitamura T., et al. Cell 66:1165-1174(1991).
Kosugi H., et al. Biochem. Biophys. Res. Commun. 208:360-367(1995).
Chen J., et al. J. Biol. Chem. 284:5763-5773(2009).
Ota T., et al. Nat. Genet. 36:40-45(2004).
Ross M.T., et al. Nature 434:325-337(2005).