

**GYPA antibody - N-terminal region**  
**Rabbit Polyclonal Antibody**  
**Catalog # AI15010****Specification**

---

**GYPA antibody - N-terminal region - Product Information**

Application	<b>WB</b>
Primary Accession	<a href="#">P02724</a>
Other Accession	<a href="#">NM_002099</a> , <a href="#">NP_002090</a>
Reactivity	<b>Human</b>
Predicted	<b>Human</b>
Host	<b>Rabbit</b>
Clonality	<b>Polyclonal</b>
Calculated MW	<b>14kDa KDa</b>

**GYPA antibody - N-terminal region - Additional Information****Gene ID** 2993**Alias Symbol** **CD235a, GPA, GPERik, GPSAT, GpMIII, HGpMIII, HGpMiV, HGpMiX, HGpMiXI, HGpSta(C), MN, MNS, PAS-2****Other Names**

Glycophorin-A, MN sialoglycoprotein, PAS-2, Sialoglycoprotein alpha, CD235a, GYPA, GPA

**Format**

Liquid. Purified antibody supplied in 1x PBS buffer with 0.09% (w/v) sodium azide and 2% sucrose.

**Reconstitution & Storage**

Add 50 ul of distilled water. Final anti-GYPA antibody concentration is 1 mg/ml in PBS buffer with 2% sucrose. For longer periods of storage, store at 20°C. Avoid repeat freeze-thaw cycles.

**Precautions**

GYPA antibody - N-terminal region is for research use only and not for use in diagnostic or therapeutic procedures.

**GYPA antibody - N-terminal region - Protein Information****Name** GYPA ([HGNC:4702](#))**Function**

Component of the ankyrin-1 complex, a multiprotein complex involved in the stability and shape of the erythrocyte membrane (PubMed: &lt;a href="http://www.uniprot.org/citations/35835865" target="\_blank"&gt;35835865&lt;/a&gt;). Glycophorin A is the major intrinsic membrane protein of the erythrocyte. The N-terminal glycosylated segment, which lies outside the erythrocyte membrane, has MN blood group receptors. Appears to be important for the function of SLC4A1 and is required for high activity of SLC4A1. May be involved in translocation of SLC4A1 to the plasma membrane.

### Cellular Location

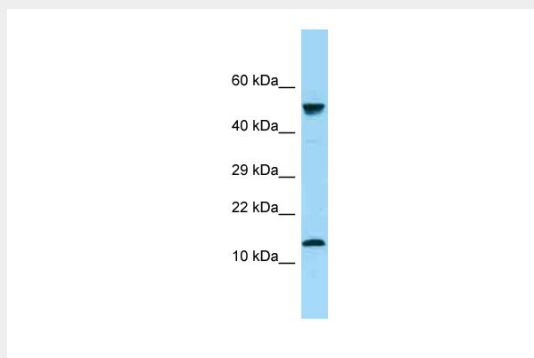
Cell membrane; Single-pass type I membrane protein Note=Appears to be colocalized with SLC4A1

### GYPA antibody - N-terminal region - Protocols

Provided below are standard protocols that you may find useful for product applications.

- [Western Blot](#)
- [Blocking Peptides](#)
- [Dot Blot](#)
- [Immunohistochemistry](#)
- [Immunofluorescence](#)
- [Immunoprecipitation](#)
- [Flow Cytometry](#)
- [Cell Culture](#)

### GYPA antibody - N-terminal region - Images



WB Suggested Anti-GYPA Antibody Titration: 1.0  $\mu$ g/ml  
Positive Control: Fetal Kidney

### GYPA antibody - N-terminal region - References

- Siebert P.D.,et al.Proc. Natl. Acad. Sci. U.S.A. 83:1665-1669(1986).  
Tate C.G.,et al.Biochem. J. 254:743-750(1988).  
Kudo S.,et al.Proc. Natl. Acad. Sci. U.S.A. 86:4619-4623(1989).  
Jawad K.,et al.Nucleic Acids Res. 18:5829-5836(1990).  
Kudo S.,et al.J. Biochem. 116:183-192(1994).