

**IL28B antibody - C-terminal region**  
**Rabbit Polyclonal Antibody**  
**Catalog # AI15004**

**Specification**

---

**IL28B antibody - C-terminal region - Product Information**

Application	WB
Primary Accession	<a href="#">Q8IZI9</a>
Other Accession	<a href="#">NM_172139</a> , <a href="#">NP_742151</a>
Reactivity	Human, Mouse, Rat, Rabbit, Pig, Horse, Dog
Predicted Host	Human, Mouse, Rat
Clonality	Rabbit
Calculated MW	Polyclonal 22kDa KDa

**IL28B antibody - C-terminal region - Additional Information**

**Gene ID** 282617

**Alias Symbol** IFNL3, IL-28B, IL28C, IL28B

**Other Names**

Interferon lambda-3, IFN-lambda-3, Cytokine Zcyto22, Interleukin-28B, IL-28B, Interleukin-28C, IL-28C, IFNL3, IL28B, IL28C, ZCYTO22

**Target/Specificity**

This antibody is pan-IL28 specific, as there is 100% homology to the human IL28A sequence, per <http://www.uniprot.org/uniprot/Q8IZJ0>.

**Format**

Liquid. Purified antibody supplied in 1x PBS buffer with 0.09% (w/v) sodium azide and 2% sucrose.

**Reconstitution & Storage**

Add 50 ul of distilled water. Final anti-IL28B antibody concentration is 1 mg/ml in PBS buffer with 2% sucrose. For longer periods of storage, store at 20°C. Avoid repeat freeze-thaw cycles.

**Precautions**

IL28B antibody - C-terminal region is for research use only and not for use in diagnostic or therapeutic procedures.

**IL28B antibody - C-terminal region - Protein Information**

**Name** IFNL3

**Synonyms** IL28B, IL28C, ZCYTO22

**Function**

Cytokine with antiviral, antitumour and immunomodulatory activities. Plays a critical role in the

antiviral host defense, predominantly in the epithelial tissues. Acts as a ligand for the heterodimeric class II cytokine receptor composed of IL10RB and IFNLR1, and receptor engagement leads to the activation of the JAK/STAT signaling pathway resulting in the expression of IFN-stimulated genes (ISG), which mediate the antiviral state. Has a restricted receptor distribution and therefore restricted targets: is primarily active in epithelial cells and this cell type-selective action is because of the epithelial cell-specific expression of its receptor IFNLR1. Seems not to be essential for early virus-activated host defense in vaginal infection, but plays an important role in Toll-like receptor (TLR)- induced antiviral defense. Plays a significant role in the antiviral immune defense in the intestinal epithelium. Exerts an immunomodulatory effect by up-regulating MHC class I antigen expression.

### Cellular Location

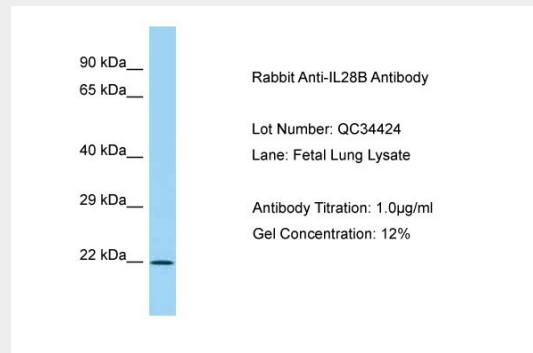
Secreted.

### IL28B antibody - C-terminal region - Protocols

Provided below are standard protocols that you may find useful for product applications.

- [Western Blot](#)
- [Blocking Peptides](#)
- [Dot Blot](#)
- [Immunohistochemistry](#)
- [Immunofluorescence](#)
- [Immunoprecipitation](#)
- [Flow Cytometry](#)
- [Cell Culture](#)

### IL28B antibody - C-terminal region - Images



Host: Rabbit  
Target Name: IL28B  
Sample Tissue: Fetal Lung  
Antibody Dilution: 1.0µg/ml

### IL28B antibody - C-terminal region - References

Sheppard P., et al. *Nat. Immunol.* 4:63-68(2003).  
Kotenko S.V., et al. *Nat. Immunol.* 4:69-77(2003).  
Li M.C., et al. *Acta Pharmacol. Sin.* 27:453-459(2006).  
Grimwood J., et al. *Nature* 428:529-535(2004).  
Donnelly R.P., et al. *J. Interferon Cytokine Res.* 30:555-564(2010).