

MN1 antibody - C-terminal region
Rabbit Polyclonal Antibody
Catalog # AI14987

Specification

MN1 antibody - C-terminal region - Product Information

Application	WB
Primary Accession	O10571
Other Accession	NM_002430 , NP_002421
Reactivity	Human, Mouse, Rat, Rabbit, Pig, Horse, Bovine, Guinea Pig, Dog
Predicted	Human, Mouse, Rat, Rabbit, Pig, Horse, Bovine, Guinea Pig, Dog
Host	Rabbit
Clonality	Polyclonal
Calculated MW	136kDa KDa

MN1 antibody - C-terminal region - Additional Information

Gene ID 4330

Alias Symbol MGCR, MGCR1, MGCR1-PEN, dJ353E16.2
Other Names
Probable tumor suppressor protein MN1, MN1

Format

Liquid. Purified antibody supplied in 1x PBS buffer with 0.09% (w/v) sodium azide and 2% sucrose.

Reconstitution & Storage

Add 50 ul of distilled water. Final anti-MN1 antibody concentration is 1 mg/ml in PBS buffer with 2% sucrose. For longer periods of storage, store at 20°C. Avoid repeat freeze-thaw cycles.

Precautions

MN1 antibody - C-terminal region is for research use only and not for use in diagnostic or therapeutic procedures.

MN1 antibody - C-terminal region - Protein Information

Name MN1

Function

Transcriptional activator which specifically regulates expression of TBX22 in the posterior region of the developing palate. Required during later stages of palate development for growth and medial fusion of the palatal shelves. Promotes maturation and normal function of calvarial osteoblasts, including expression of the osteoclastogenic cytokine TNFSF11/RANKL. Necessary for normal development of the membranous bones of the skull (By similarity). May play a role in tumor suppression (Probable).

Cellular Location

Nucleus.

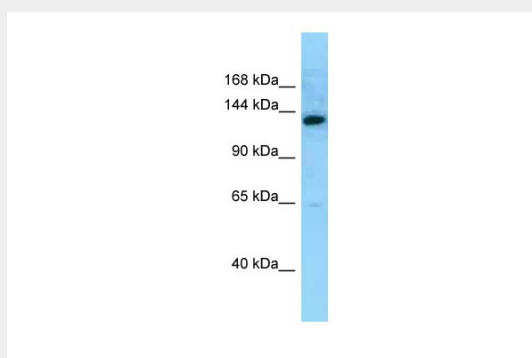
Tissue Location

Widely expressed in fetal and adult tissues. Highest expression is observed in fetal brain and skeletal muscle, and adult skeletal muscle.

MN1 antibody - C-terminal region - Protocols

Provided below are standard protocols that you may find useful for product applications.

- [Western Blot](#)
- [Blocking Peptides](#)
- [Dot Blot](#)
- [Immunohistochemistry](#)
- [Immunofluorescence](#)
- [Immunoprecipitation](#)
- [Flow Cytometry](#)
- [Cell Culture](#)

MN1 antibody - C-terminal region - Images

WB Suggested Anti-MN1 Antibody Titration: 1.0 µg/ml
Positive Control: Fetal Liver

MN1 antibody - C-terminal region - References

Deprez R.H.L., et al. *Oncogene* 10:1521-1528(1995).
Riegmann P.H.J., et al. Submitted (AUG-2004) to the EMBL/GenBank/DDBJ databases.
Dunham I., et al. *Nature* 402:489-495(1999).
Mural R.J., et al. Submitted (JUL-2005) to the EMBL/GenBank/DDBJ databases.
Dmitrenko V.V., et al. *Cyt. Genet.* 30:41-47(1996).