

CD207 antibody - C-terminal region
Rabbit Polyclonal Antibody
Catalog # AI14970**Specification**

CD207 antibody - C-terminal region - Product Information

Application	WB
Primary Accession	O9UJ71
Other Accession	NM_015717 , NP_056532
Reactivity	Human, Mouse, Rat, Rabbit, Pig, Horse, Bovine, Guinea Pig
Predicted Host	Mouse, Rat, Pig, Horse, Bovine, Guinea Pig
Clonality	Rabbit
Calculated MW	Polyclonal 36kDa KDa

CD207 antibody - C-terminal region - Additional Information**Gene ID** 50489**Alias Symbol** CLEC4K
Other Names
C-type lectin domain family 4 member K, Langerin, CD207, CD207, CLEC4K**Format**

Liquid. Purified antibody supplied in 1x PBS buffer with 0.09% (w/v) sodium azide and 2% sucrose.

Reconstitution & Storage

Add 50 ul of distilled water. Final anti-CD207 antibody concentration is 1 mg/ml in PBS buffer with 2% sucrose. For longer periods of storage, store at 20°C. Avoid repeat freeze-thaw cycles.

Precautions

CD207 antibody - C-terminal region is for research use only and not for use in diagnostic or therapeutic procedures.

CD207 antibody - C-terminal region - Protein Information**Name** CD207**Synonyms** CLEC4K**Function**

Calcium-dependent lectin displaying mannose-binding specificity. Induces the formation of Birbeck granules (BGs); is a potent regulator of membrane superimposition and zippering. Binds to sulfated as well as mannosylated glycans, keratan sulfate (KS) and beta-glucans. Facilitates uptake of antigens and is involved in the routing and/or processing of antigen for presentation to T cells. Major receptor on primary Langerhans cells for Candida species, Saccharomyces species, and Malassezia furfur. Protects against human immunodeficiency virus-1 (HIV-1) infection. Binds to

high-mannose structures present on the envelope glycoprotein which is followed by subsequent targeting of the virus to the Birbeck granules leading to its rapid degradation.

Cellular Location

Membrane; Single-pass type II membrane protein. Note=Found in Birbeck granules (BGs), which are organelles consisting of superimposed and zippered membranes

Tissue Location

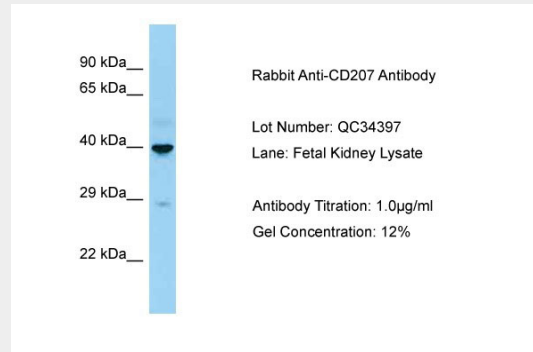
Exclusively expressed by Langerhans cells. Expressed in astrocytoma and malignant ependymoma, but not in normal brain tissues.

CD207 antibody - C-terminal region - Protocols

Provided below are standard protocols that you may find useful for product applications.

- [Western Blot](#)
- [Blocking Peptides](#)
- [Dot Blot](#)
- [Immunohistochemistry](#)
- [Immunofluorescence](#)
- [Immunoprecipitation](#)
- [Flow Cytometry](#)
- [Cell Culture](#)

CD207 antibody - C-terminal region - Images



Host: Rabbit
Target Name: CD207
Sample Tissue: Fetal Kidney
Antibody Dilution: 1.0µg/ml

CD207 antibody - C-terminal region - References

Valladeau J., et al. *Immunity* 12:71-81(2000).
Hillier L.W., et al. *Nature* 434:724-731(2005).
Stambach N.S., et al. *Glycobiology* 13:401-410(2003).
Valladeau J., et al. *Immunol. Res.* 28:93-107(2003).
de Witte L., et al. *Nat. Med.* 13:367-371(2007).