

VILL antibody - C-terminal region
Rabbit Polyclonal Antibody
Catalog # AI14964**Specification**

VILL antibody - C-terminal region - Product Information

Application	WB
Primary Accession	O15195
Other Accession	NM_015873 , AAH00243
Reactivity	Human, Pig, Horse, Bovine, Dog
Predicted	Human, Horse, Bovine, Dog
Host	Rabbit
Clonality	Polyclonal
Calculated MW	75kDa KDa

VILL antibody - C-terminal region - Additional Information**Gene ID** 50853**Other Names**

Villin-like protein, VILL

Format

Liquid. Purified antibody supplied in 1x PBS buffer with 0.09% (w/v) sodium azide and 2% sucrose.

Reconstitution & Storage

Add 50 ul of distilled water. Final anti-VILL antibody concentration is 1 mg/ml in PBS buffer with 2% sucrose. For longer periods of storage, store at 20°C. Avoid repeat freeze-thaw cycles.

Precautions

VILL antibody - C-terminal region is for research use only and not for use in diagnostic or therapeutic procedures.

VILL antibody - C-terminal region - Protein Information**Name** VILL**Function**

Possible tumor suppressor.

Tissue Location

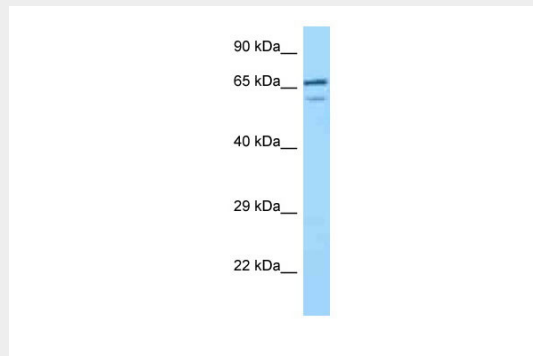
Ubiquitously expressed in 16 tissues examined.

VILL antibody - C-terminal region - Protocols

Provided below are standard protocols that you may find useful for product applications.

- [Western Blot](#)
- [Blocking Peptides](#)
- [Dot Blot](#)
- [Immunohistochemistry](#)
- [Immunofluorescence](#)
- [Immunoprecipitation](#)
- [Flow Cytometry](#)
- [Cell Culture](#)

VILL antibody - C-terminal region - Images



WB Suggested Anti-VILL Antibody Titration: 1.0 μ g/ml
Positive Control: Fetal Liver

VILL antibody - C-terminal region - References

Muzny D.M., et al. Nature 440:1194-1198(2006).
Mural R.J., et al. Submitted (JUL-2005) to the EMBL/GenBank/DDBJ databases.
Ishikawa S., et al. DNA Res. 4:35-43(1997).