

PTGER1 Antibody - C-terminal region
Rabbit Polyclonal Antibody
Catalog # AI14962

Specification

PTGER1 Antibody - C-terminal region - Product Information

Application	WB
Primary Accession	P34995
Other Accession	NP_000946
Reactivity	Human
Host	Rabbit
Clonality	Polyclonal
Calculated MW	44kDa KDa

PTGER1 Antibody - C-terminal region - Additional Information

Gene ID 5731

Alias Symbol PTGER1,

Other Names

Prostaglandin E2 receptor EP1 subtype, PGE receptor EP1 subtype, PGE2 receptor EP1 subtype, Prostanoid EP1 receptor, PTGER1

Format

Liquid. Purified antibody supplied in 1x PBS buffer with 0.09% (w/v) sodium azide and 2% sucrose.

Reconstitution & Storage

Add 50 μ l of distilled water. Final Anti-PTGER1 antibody concentration is 1 mg/ml in PBS buffer with 2% sucrose. For longer periods of storage, store at -20°C. Avoid repeat freeze-thaw cycles.

Precautions

PTGER1 Antibody - C-terminal region is for research use only and not for use in diagnostic or therapeutic procedures.

PTGER1 Antibody - C-terminal region - Protein Information

Name PTGER1

Function

Receptor for prostaglandin E2 (PGE2). The activity of this receptor is mediated by G(q) proteins which activate a phosphatidylinositol-calcium second messenger system. May play a role as an important modulator of renal function. Implicated the smooth muscle contractile response to PGE2 in various tissues.

Cellular Location

Cell membrane; Multi-pass membrane protein.

Tissue Location

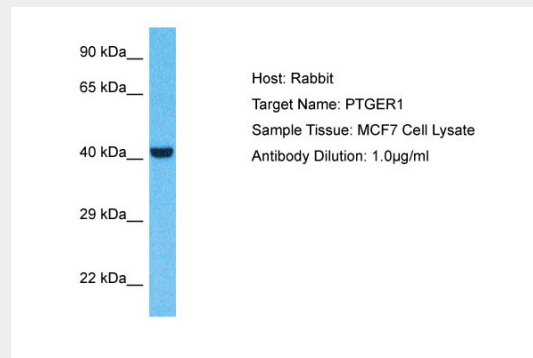
Abundant in kidney. Lower level expression in lung, skeletal muscle and spleen, lowest expression in testis and not detected in liver brain and heart

PTGER1 Antibody - C-terminal region - Protocols

Provided below are standard protocols that you may find useful for product applications.

- [Western Blot](#)
- [Blocking Peptides](#)
- [Dot Blot](#)
- [Immunohistochemistry](#)
- [Immunofluorescence](#)
- [Immunoprecipitation](#)
- [Flow Cytometry](#)
- [Cell Culture](#)

PTGER1 Antibody - C-terminal region - Images



Host: Rabbit
Target Name: PTGER1
Sample Tissue: MCF7 Whole Cell lysates
Antibody Dilution: 1.0µg/ml

PTGER1 Antibody - C-terminal region - References

Funk C.D., et al. J. Biol. Chem. 268:26767-26772(1993).
Suwa M., et al. Submitted (JUL-2001) to the EMBL/GenBank/DDBJ databases.
Warren C.N., et al. Submitted (APR-2003) to the EMBL/GenBank/DDBJ databases.