

**IL13RA1 Antibody - N-terminal region**  
**Rabbit Polyclonal Antibody**  
**Catalog # AI14955****Specification**

---

**IL13RA1 Antibody - N-terminal region - Product Information**

Application	<b>WB</b>
Primary Accession	<a href="#">P78552</a>
Other Accession	<a href="#">NM_001560</a> , <a href="#">NP_001551</a>
Reactivity	<b>Human, Mouse, Rat, Rabbit, Pig, Sheep, Horse, Bovine, Guinea Pig, Dog</b>
Predicted	<b>Human, Mouse, Rat, Rabbit, Pig, Sheep, Horse, Bovine, Guinea Pig, Dog</b>
Host	<b>Rabbit</b>
Clonality	<b>Polyclonal</b>
Calculated MW	<b>47kDa KDa</b>

**IL13RA1 Antibody - N-terminal region - Additional Information****Gene ID** 3597**Alias Symbol** **CD213A1, IL-13Ra, NR4****Other Names**

Interleukin-13 receptor subunit alpha-1, IL-13 receptor subunit alpha-1, IL-13R subunit alpha-1, IL-13R-alpha-1, IL-13RA1, Cancer/testis antigen 19, CT19, CD213a1, IL13RA1, IL13R, IL13RA

**Format**

Liquid. Purified antibody supplied in 1x PBS buffer with 0.09% (w/v) sodium azide and 2% sucrose.

**Reconstitution & Storage**

Add 50 ul of distilled water. Final anti-IL13RA1 antibody concentration is 1 mg/ml in PBS buffer with 2% sucrose. For longer periods of storage, store at 20°C. Avoid repeat freeze-thaw cycles.

**Precautions**

IL13RA1 Antibody - N-terminal region is for research use only and not for use in diagnostic or therapeutic procedures.

**IL13RA1 Antibody - N-terminal region - Protein Information****Name** IL13RA1**Synonyms** IL13R, IL13RA**Function**

Binds with low affinity to interleukin-13 (IL13). Together with IL4RA can form a functional receptor for IL13. Also serves as an alternate accessory protein to the common cytokine receptor gamma chain for interleukin-4 (IL4) signaling, but cannot replace the function of IL2RG in allowing enhanced interleukin-2 (IL2) binding activity.

**Cellular Location**

Membrane; Single-pass type I membrane protein.

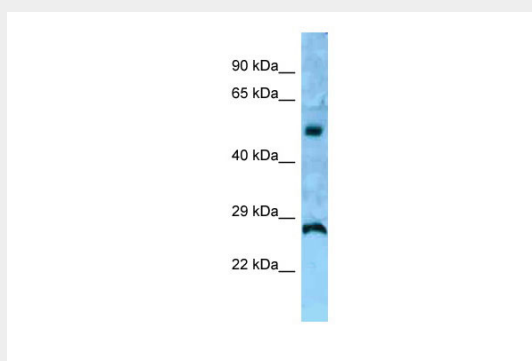
**Tissue Location**

Ubiquitous. Highest levels in heart, liver, skeletal muscle and ovary; lowest levels in brain, lung and kidney Also found in B-cells, T-cells and endothelial cells

**IL13RA1 Antibody - N-terminal region - Protocols**

Provided below are standard protocols that you may find useful for product applications.

- [Western Blot](#)
- [Blocking Peptides](#)
- [Dot Blot](#)
- [Immunohistochemistry](#)
- [Immunofluorescence](#)
- [Immunoprecipitation](#)
- [Flow Cytometry](#)
- [Cell Culture](#)

**IL13RA1 Antibody - N-terminal region - Images**

WB Suggested Anti-IL13RA1 Antibody Titration: 1.0 µg/ml  
Positive Control: Fetal kidney

**IL13RA1 Antibody - N-terminal region - References**

- Miloux B., et al. FEBS Lett. 401:163-166(1997).  
Gauchat J.-F., et al. Submitted (JAN-1997) to the EMBL/GenBank/DDBJ databases.  
Aman M.J., et al. J. Biol. Chem. 271:29265-29270(1996).  
Wada M., et al. Submitted (SEP-1999) to the EMBL/GenBank/DDBJ databases.  
Ota T., et al. Nat. Genet. 36:40-45(2004).